



## Workmate Engine Manual



# 零件目录图册

## PARTS CATALOGUE

# F3型发动机



### 编制说明

- ▶本册为F3发动机零部件目录图册,零部件目录图册是根据摩托车的安装配置顺序进行编辑,用于客户订购零件时参考。
- ▶欲知某零件的名称、件号或装配关系,可按零件形状,在有关的插图中查找,即可知名称、数量、状态、是否维修(“Y”为是,“N”为否)、重量、属性(零件材质):Metal-金属(合金钢)、Aluminium-铝、Rubber-橡胶、Plastic-塑料、Asbestos-石棉、备注(该零件安装的位置或其他)。
- ▶索引由件号和图号组成,件号按照A、B、C、D……顺序排列。根据件号可查找其图号。
- ▶温馨提示:此图册中的图形仅供参考,一切以实物为准。如有零件变动,不另行通知。

### Compilation

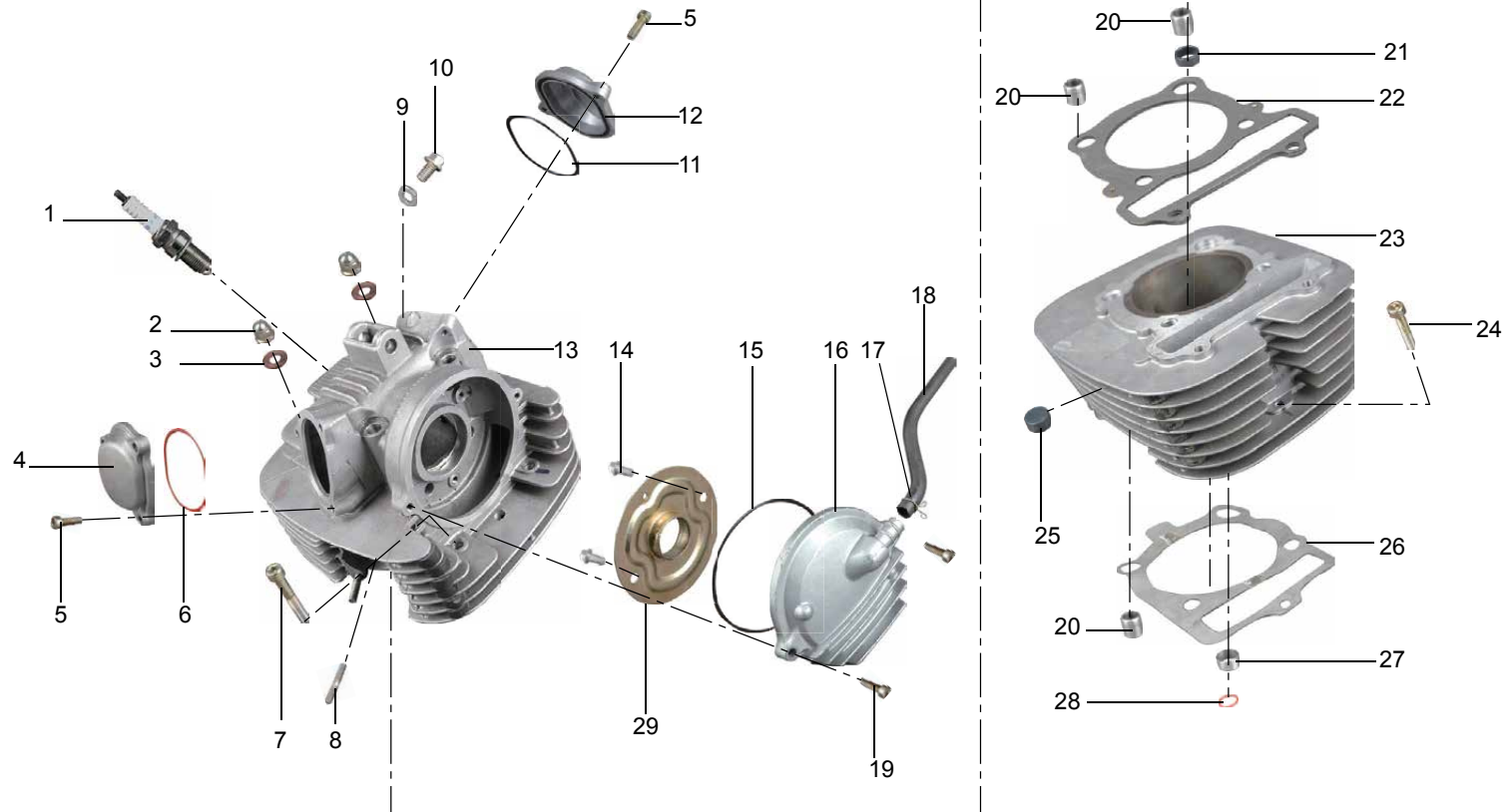
- ▶This book for the F3Atlas engine parts catalog Atlas, spare parts inventory atlas is based on motorcycles in order to edit the installation configuration for the customer order parts reference.
- ▶For a parts name, parts number or assembly relationship, according to part shape, in the illustrations in the search, you can know the name, number, status, whether the maintenance ("Y" is yes, "N" for no), weight, property (part material): Metal-metal (alloy steel), Aluminium-Aluminum, Rubber-Rubber, Plastic-Plastic, Asbestos-asbestos, Notes (the parts installed location or other).
- ▶Index numbers and drawing numbers from the pieces of the composition, piece number in accordance with A, B, C, D ... .. order. According to its plan to find pieces of ID numbers can be.
- ▶Warm Tip: The graphics in this atlas for reference only, and all kind prevail. If spare parts to change without notice.

# 目录

## Contents

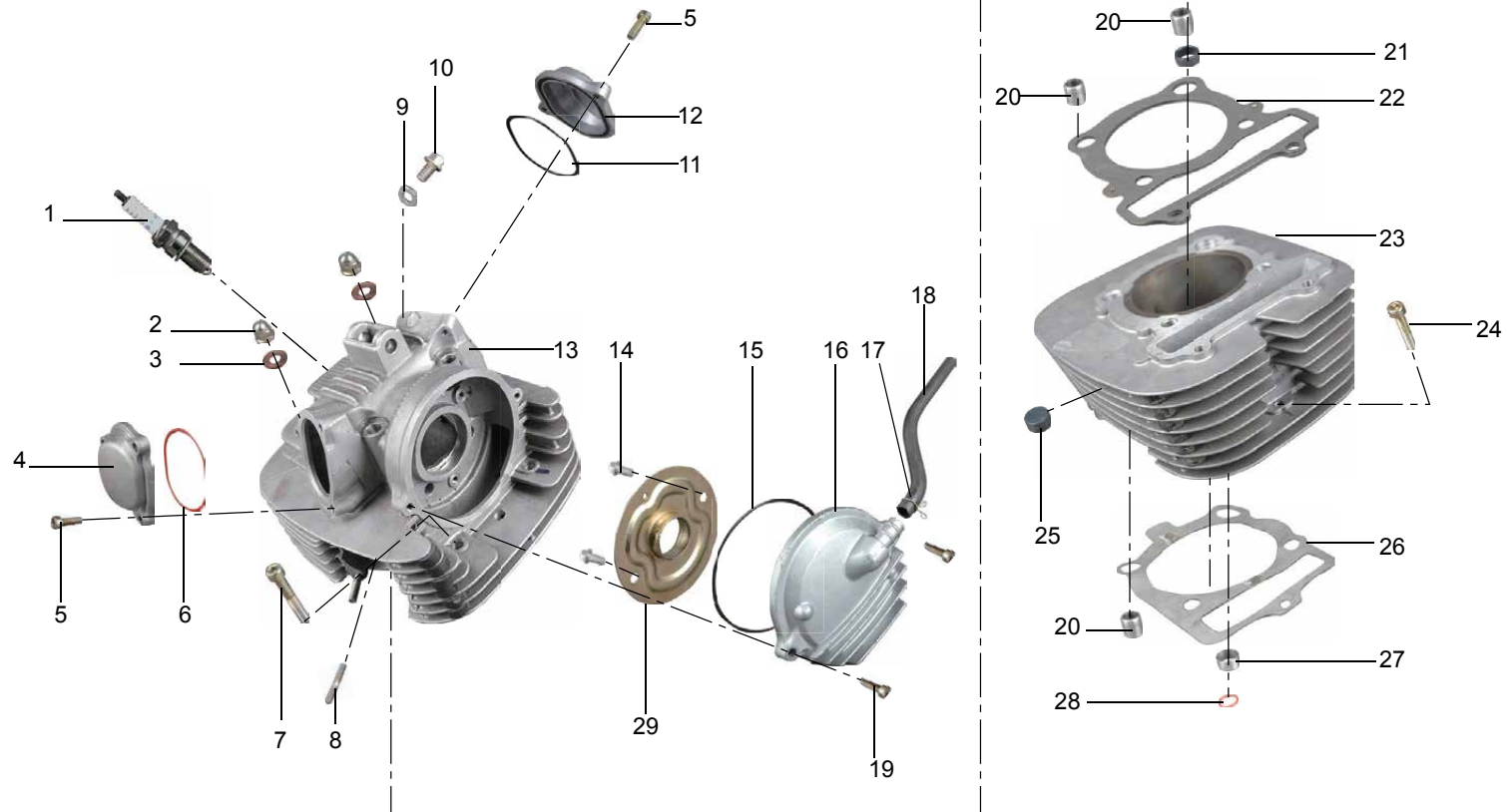
1. 气缸总成Cylinders.....	2
2. 配气机构Valve.....	6
3. 进排气门The valves.....	8
4. 曲轴箱Crankcase.....	10
5. 曲轴箱盖Crankcase cover.....	12
6. 离合器Clutch.....	14
7. 操纵、换挡凸轮、拨叉机构Control, shift cams, fork institutions.....	18
8-1. 排气消声器Exhaust Muffler.....	22
8-2. 排气消声器（欧标）Exhaust muffler(European standard).....	24
9. 输出机构Output sector.....	26
10. 变速齿轮机构Change gear sector.....	30
11. 电起动机构Electric starter institutions.....	36
12-1. 空滤器Air Filter.....	38
12-2. 空滤器（欧标）Air filter (European standard).....	40
12-3. 空滤器（EPA）Air filter (EPA).....	44
13. 曲轴连杆机构Crank Linkage.....	46
14. 起动系统（手起动）Starting System (hand start).....	50
15. 润滑系统Lubrication system.....	52
零件号码索引Parts No Index Chart.....	56

1. Cylinders



序号 No.	零件代号 Part code	零件名称 Part Name	数量 Amount	是否维修 Y/N Maintenance	重量 Weight	属性 Property	备注 Notes
1	DR8EA/NGK	火花塞 Spark Plug	1	Y	0.0395		
2	F3-101000-0	盖形螺母 Cap-shaped nut	4	Y	0.021	Metal	
3	F3-100403-0	铜垫圈 Copper washer	4	Y	0.004	Metal	
4	FG-100201-0	下气门盖 Under the valve cover	1	Y	0.057	Metal	
5	BGB/T 70.1-M6×16-52	螺钉 Screw	5	Y	0.0065	Metal	
6	FG-100601-0	O形圈 O-Ring	1	Y	0.0005	Rubber	
7	BGB/T 70.1-M8×50-52	螺钉 Screw	2	Y	0.023	Metal	
8	FB-110851-0	双头螺柱 Stud	2	Y	0.0065	Metal	
9	FB-100405-0	垫圈 Washer	1	Y	0.0001	Metal	
10	BQ/JR YP80-M6×10-22	螺栓 Bolt	1	Y	0.0035	Metal	
11	F3-100601-0	O形圈 O-ring	1	Y	0.0005	Rubber	
12	F3-100202-0	上气门盖 On the valve cover	1	Y	0.0046	Metal	
13	F3-110000-0	气缸盖总成 Cylinder head assembly	1	Y	4.04	Metal	
14	BQ/JR YP80-M6×12-22	螺栓 Bolt	2	Y	0.0055	Metal	
15	F3-100602-0	O形圈 O-ring	1	Y	0.0006	Rubber	
16	F3-103000-0	链轮室盖组合 Sprocket lid assy	1	Y	0.208	Metal	
17	FG-100701-0	卡箍 Clamp	1	Y	0.0005	Metal	
18	F3-100605-0	通气管 Snorkel	1	Y	0.052	Rubber	
19	BGB/T 70.1-M6×25-52	螺钉 Screw	2	Y	0.0065	Metal	
20	BQ/JR YP96-14×16-W0	定位销 Pin	3	Y	0.008	Metal	
21	F3-100603-0	油封 Oil seal	1	Y	0.0007	Rubber	
22	F3-102000-0	气缸盖垫片组合 Cylinder head gasket assy	1	Y	0.0325	Metal	
23	F3-201000-0	气缸体组合 Combination Cylinder	1	Y	3	Metal	
24	BGB/T 70.1-M6×30-52	螺钉 Screw	1	Y	0.008	Metal	
25	F3-100604-0	减震块 Shock Block	24	Y	0.002	Rubber	

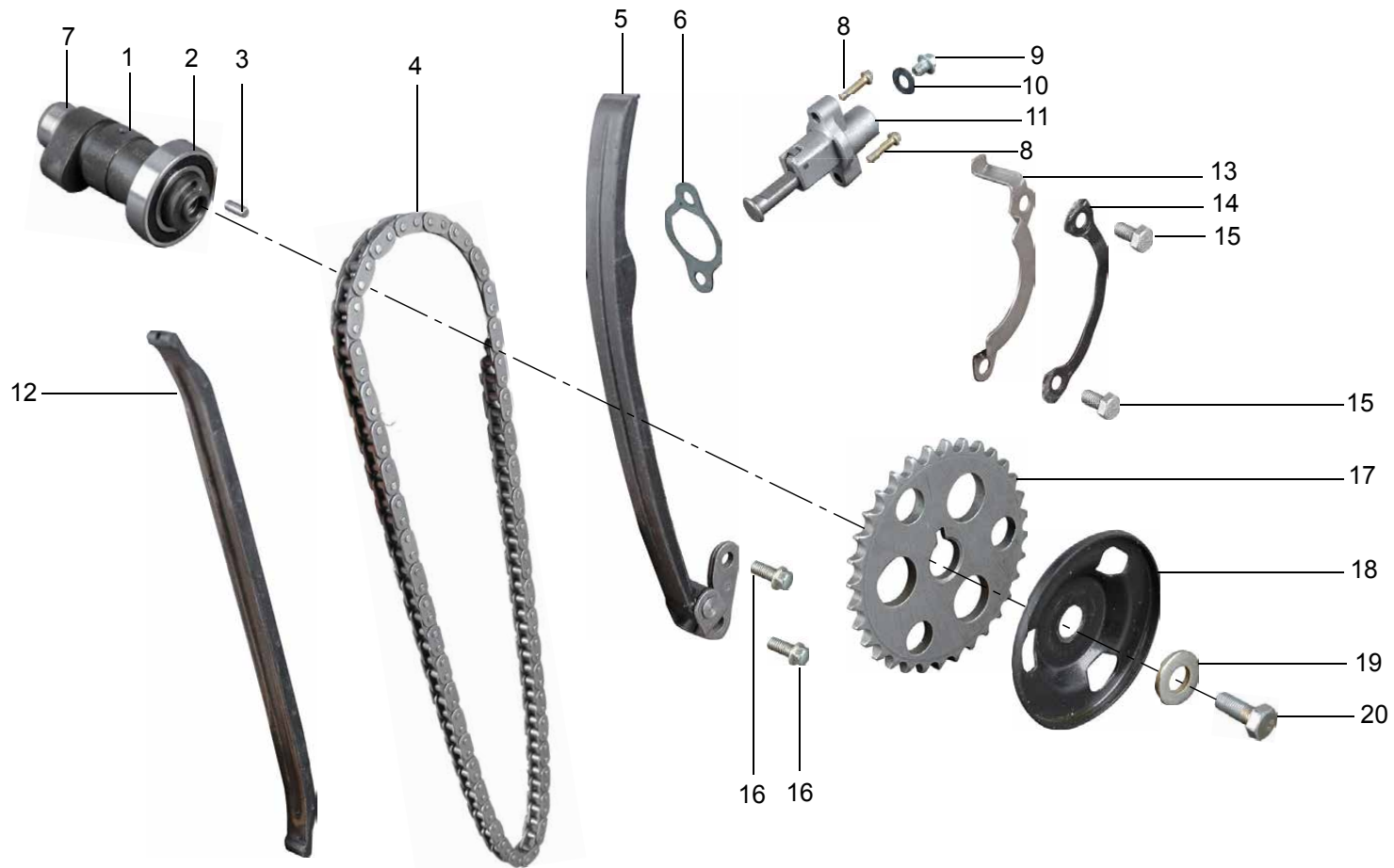
1. Cylinders





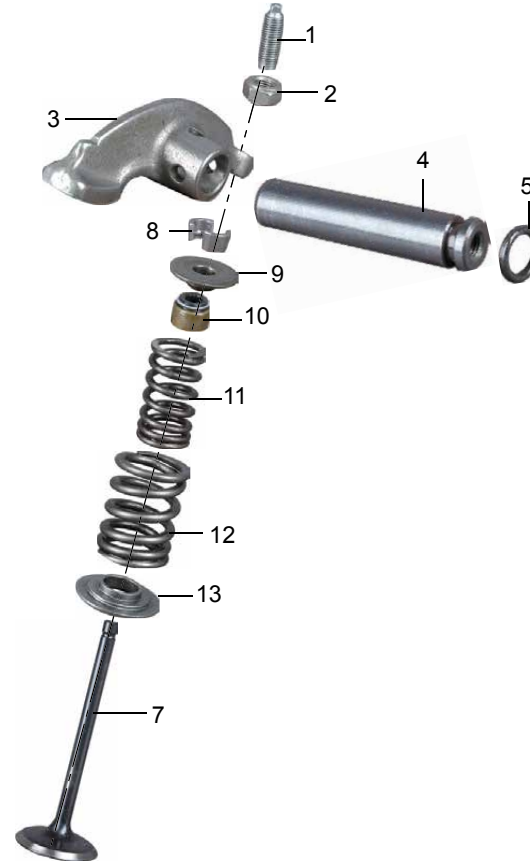
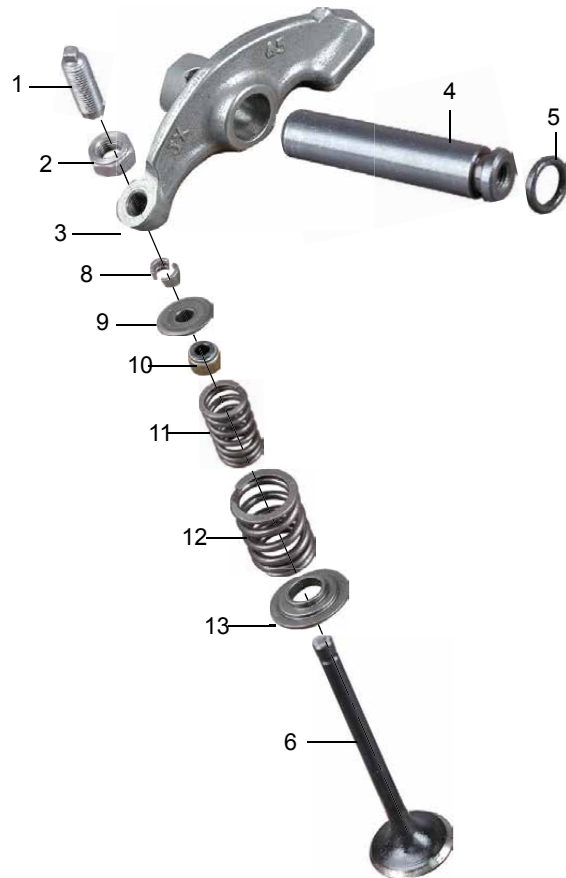
序号 No.	零件代号 Part code	零件名称 Part Name	数量 Amount	是否维修 Y/N Maintenance	重量 Weight	属性 Property	备注 Notes
26	F3-200801-0	气缸体垫片 Cylinder Gasket	1	Y	0.001	Metal	
27	F3-200002-0	定位销 Pin	1	Y	0.001	Metal	
28	F3-200601-0	O形圈 O-ring	1	Y	0.001	Rubber	
29	FG-102000-0	挡油盘组合 Block oil pan assy	1	Y	0.0022	Metal	

2. Valve

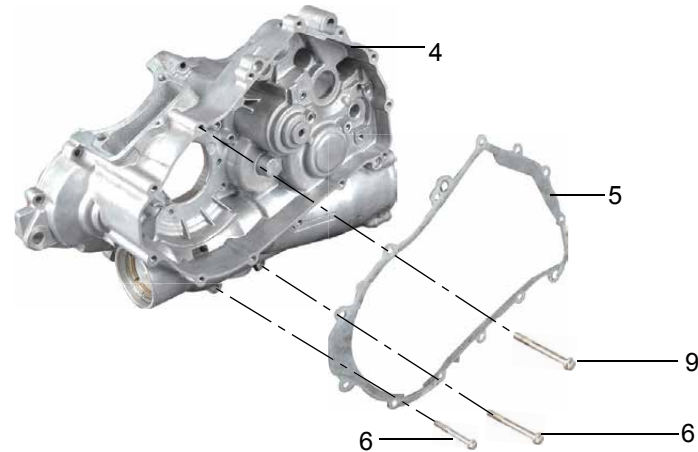
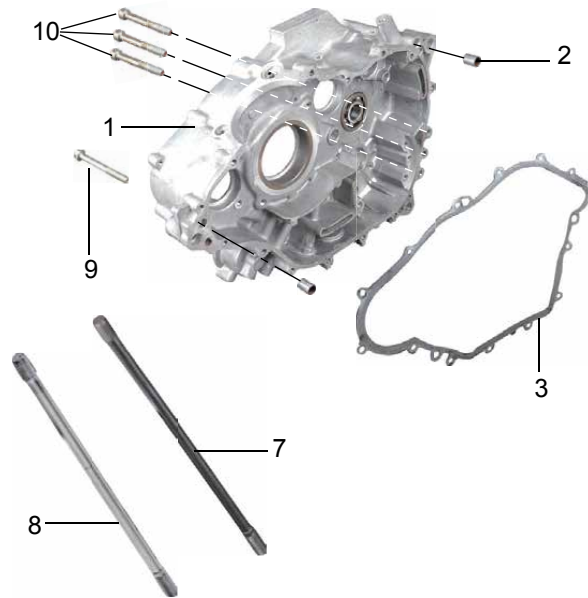


序号 No.	零件代号 Part code	零件名称 Part Name	数量 Amount	是否维修 Y/N Maintenance	重量 Weight	属性 Property	备注 Notes
1	F3-114201-0	配气凸轮轴	Inlet camshaft	1	Y	0.452	Metal
2	BGB/T 276-6005-RS/C3	深沟球轴承	Deep groove ball bearings	1	Y	0.05	Metal
3	FG-100001-0	传动销	Drive sales	1	Y	0.001	Metal
4	F3-130000-0	正时链条	Timing Chains	1	Y	0.2195	Metal
5	F3-150000-0	上导向板总成	The guide plate assy	1	Y	0.09	Plastic
6	F3-100801-0	张紧器垫片	Tensioner Gasket	1	Y	0.001	Asbestos
7	F3-114001-0	衬套	Bush	1	Y	0.015	Metal
8	BQ/JR YP80-M6×25-26	螺栓	Bolt	2	Y	0.007	Metal
9	F3-120851-0	螺栓	Bolt	1	Y	0.0115	Metal
10	F3-120403-0	垫圈	Washer	1	Y	0.001	Metal
11	F3-120000-0	链条张紧器	Chain tension	1	Y	0.079	Metal
12	F3-140000-0	下导向板总成	Under the guide plate assy	1	Y	0.062	Plastic
13	F3-110403-0	压板	Plate	1	Y	0.0115	Metal
14	F3-110402-0	止动板	Stopper plate	1	Y	0.0045	Metal
15	BGB/T 5783-M6×12-32	六角头螺栓	Hexagon head bolt	2	Y	0.004	Metal
16	BQ/JR YP80-M6×14-26	螺栓	Bolt	2	Y	0.005	Metal
17	F3-100401-0	正时链轮	Timing Sprocket	1	Y	0.118	Metal
18	F3-100402-0	甩油盘	Rejection oil pan	1	Y	0.0255	Metal
19	FG-100402-0	垫圈	Washer	1	Y	0.006	Metal
20	BGB/T 5786-M10×1.25×25-32	螺栓	Bolt	1	Y	0.023	Metal

3. The Valves

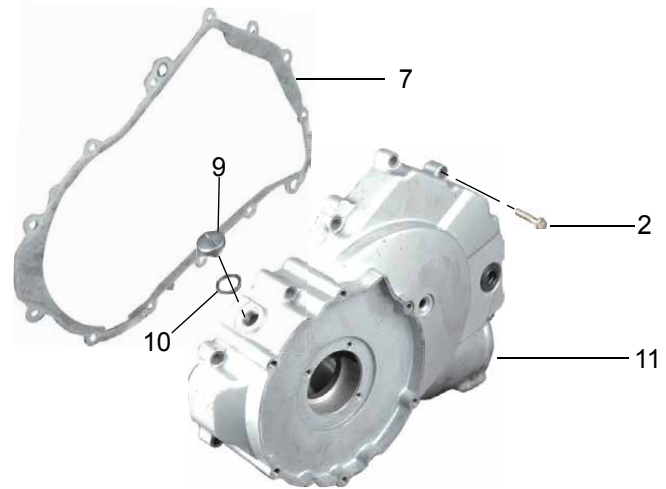
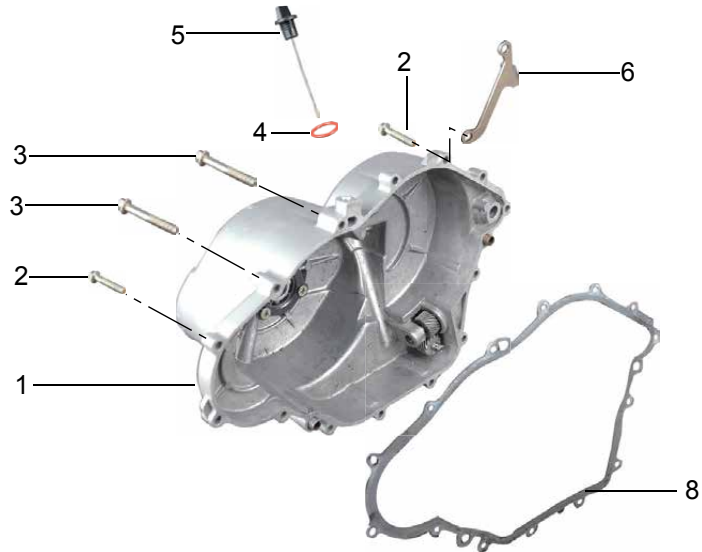


序号 No.	零件代号 Part code	零件名称 Part Name	数量 Amount	是否维修 Y/N Maintenance	重量 Weight	属性 Property	备注 Notes
1	F3-110851-0	调节螺钉	2	Y	0.003	Metal	
2	F3-110852-0	锁紧螺母	2	Y	0.0015	Metal	
3	F3-110305-0	气门摇臂	2	Y	0.0935	Metal	
4	F3-110001-0	摇臂轴	2	Y	0.036	Metal	
5	FG-110601-0	O形圈	2	Y	0.0005	Rubber	
6	F3-110303-0	排气门	1	Y	0.0595	Metal	
7	F3-110304-0	进气门	1	Y	0.0695	Metal	
8	F3-110302-0	气门锁夹	4	Y	0.0007	Metal	
9	F3-110301-0	气门弹簧盖	2	Y	0.017	Metal	
10	F3-112000-0	气门杆油封	2	Y	0.001	Metal	
11	F3-110701-0	气门内弹簧	2	Y	0.022	Metal	
12	F3-110702-0	气门外弹簧	2	Y	0.055	Metal	
13	F3-110306-0	气门弹簧座	2	Y	0.0095	Metal	



序号 No.	零件代号 Part code	零件名称 Part Name	数量 Amount	是否维修 Y/N Maintenance	重量 Weight	属性 Property	备注 Notes
1	F3-320000-0	右曲轴箱总成 Right crankcase assy	1	Y	4.47	Metal	
2	FA-300001-0	定位销Φ10×14 Φ10 × 14 pins	6	Y	0.001	Metal	
3	F3-300802-0	右曲轴箱密封垫 Right Crankcase gasket	1	Y	0.005	Metal	
4	F3-310000-0	左曲轴箱总成 Left crankcase assy	1	Y	4.17	Metal	
5	F3-300801-0	左曲轴箱密封垫 Left crankcase gasket	1	Y	0.008	Metal	
6	BQ/JR YP80-M6×60-26	螺栓 Bolt	2	Y	0.008	Metal	
7	F3-300851-0	双头螺栓 Stud	2	Y	0.095	Metal	
8	F3-300852-0	双头螺栓 Stud	2	Y	0.1	Metal	
9	BQ/JR YP80-M6×50-26	螺栓 Bolt	9	Y	0.013	Metal	
10	BGB/T 70.1-M8×60-52	螺钉 Screw	3	Y	0.275	Metal	

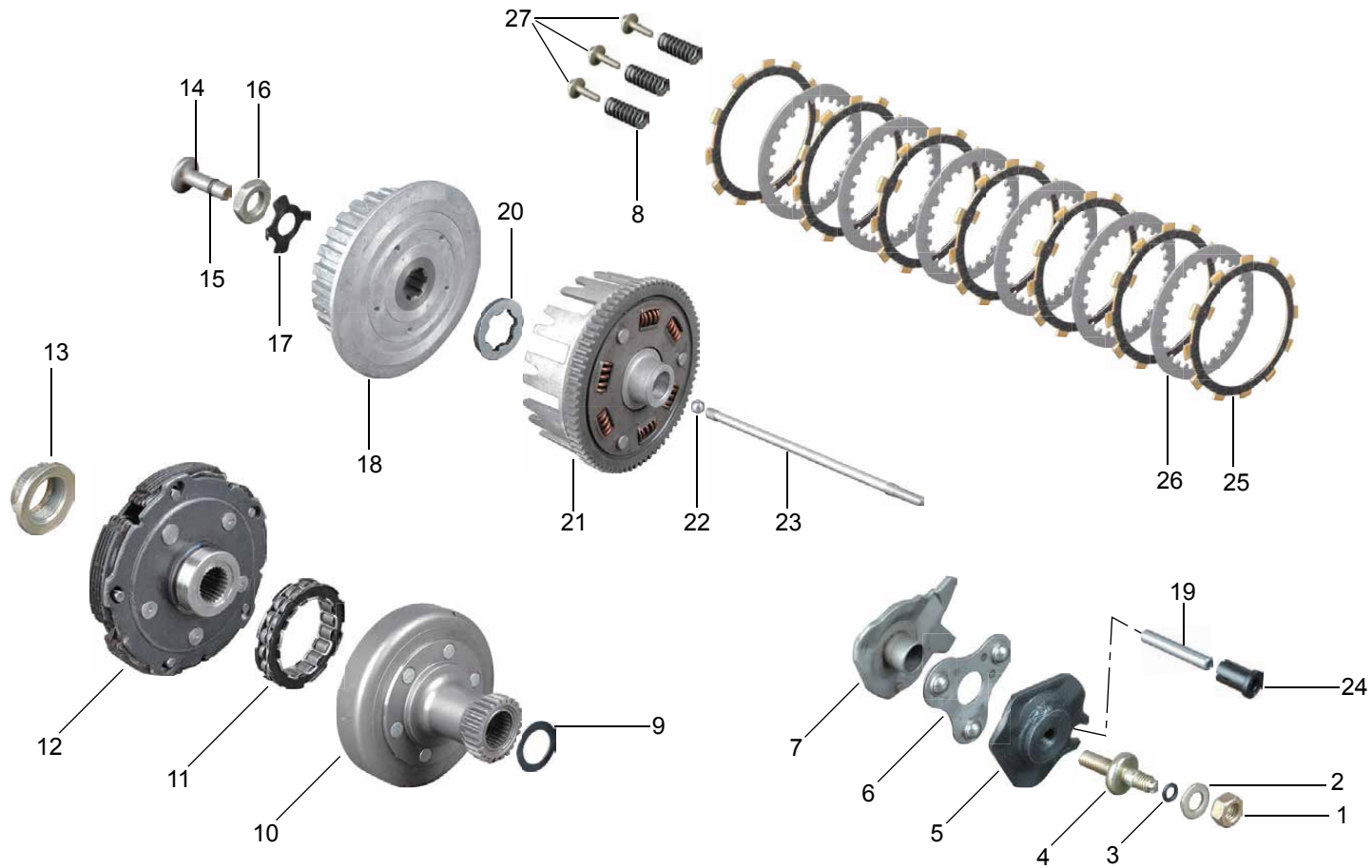
5. Crankcase Cover





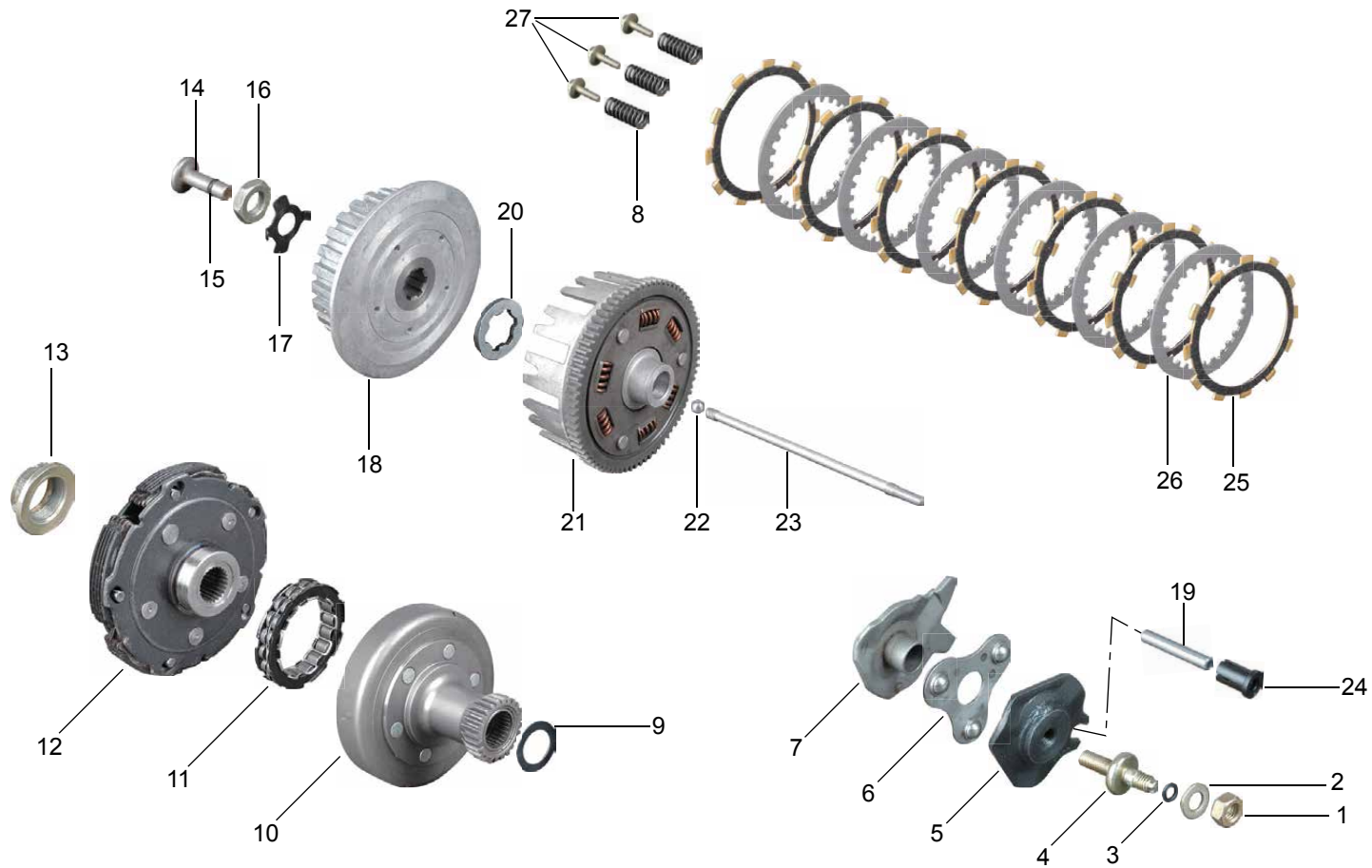
序号 No.	零件代号 Part code	零件名称 Part Name	数量 Amount	是否维修 Y/N Maintenance	重量 Weight	属性 Property	备注 Notes
1	F3-340000-0	右曲轴箱盖总成 Right crankcase cover assy	1	Y	1.5	Metal	
2	BQ/JR YP80-M6×30-26	螺栓 Bolt	27	Y	0.0075	Metal	
3	BQ/JR YP80-M6×40-26	螺栓 Bolt	2	Y	0.01	Metal	
4	ZA1-300601-0	O型圈 O-ring	1	Y	0.0005	Rubber	
5	F3-301000-0	油尺 Oil feet	1	Y	0.0195		
6	F3-300401-0	倒挡拉筋支架 Block stretch stand down	1	Y	0.0205	Metal	
7	F3-300802-0	右曲轴箱密封垫 Right Crankcase gasket	1	Y	0.06	Asbestos	
8	F3-300801-0	左曲轴箱密封垫 Left crankcase gasket	1	Y	0.05	Asbestos	
9	ZA1-300203-0	观察孔盖 Observation Hole Cover	1	Y	0.07	Metal	
10	ZA1-300604-0	O型圈 O-ring	1	Y	0.0004	Rubber	
11	F3-330000-0	左曲轴箱盖总成 Left crankcase cover assy	1	Y	1.2	Metal	

6. Clutch



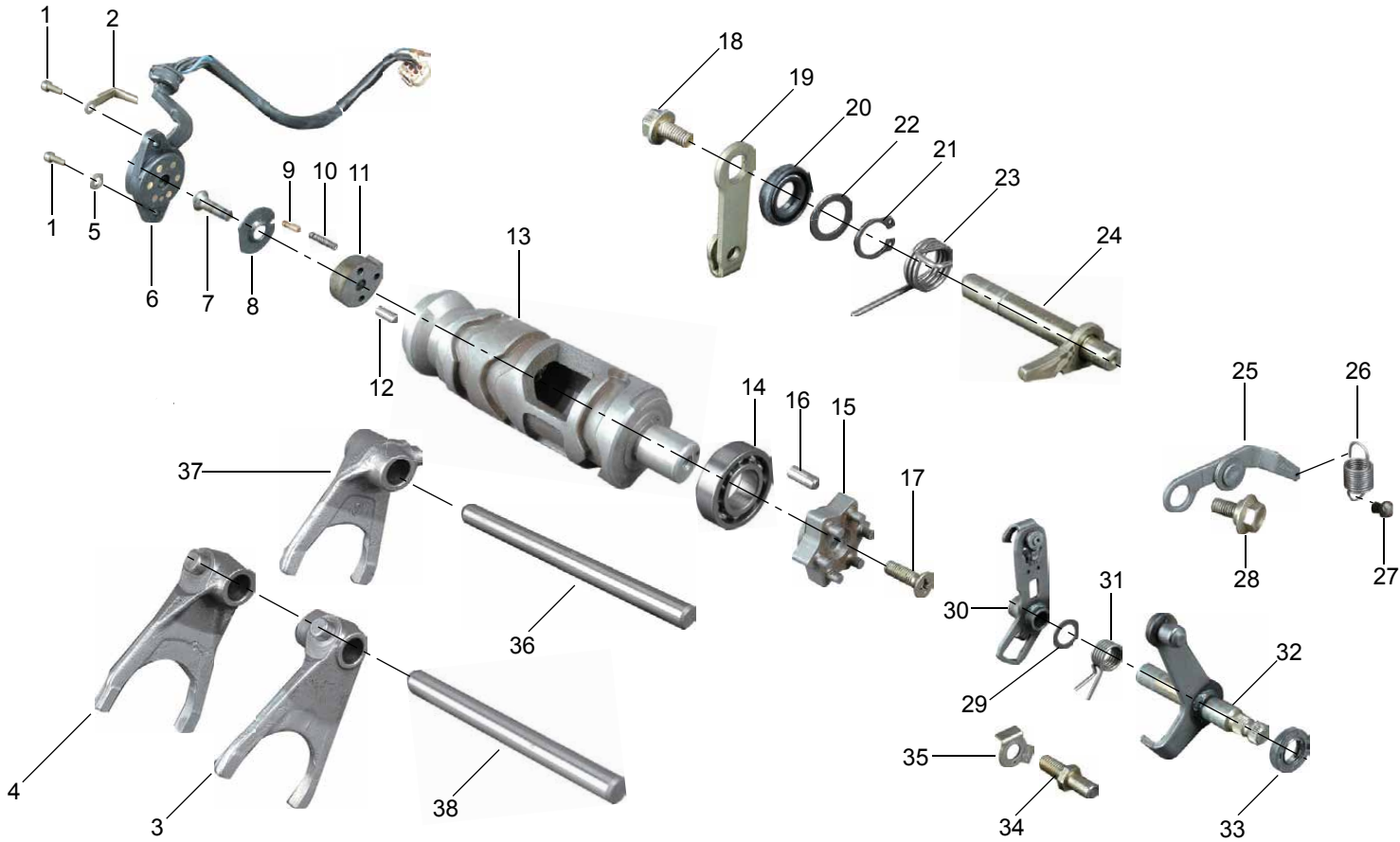
序号 No.	零件代号 Part code	零件名称 Part Name	数量 Amount	是否维修 Y/N Maintenance	重量 Weight	属性 Property	备注 Notes
1	BGB/T 6170-M8-32	2型六角螺母	2 hex nuts	1	Y	0.005	Metal
2	BGB/T 97.1-8-W2	平垫圈	Flat washer	1	Y	0.001	Metal
3	FG-400601-0	O形圈	O-ring	1	Y	0.0005	Rubber
4	F3-400852-0	离合器调节螺钉	Clutch adjustment screw	1	Y	0.023	Metal
5	F3-404000-0	下凸轮板组合	Combination under the cam plate	1	Y	0.078	Metal
6	F3-403000-0	钢球架组合	Ball rack combination	1	Y	0.025	Metal
7	F3-402000-0	上凸轮板组合	The cam plate combination	1	Y	0.0825	Metal
8	F3-420701-0	离合器弹簧	Clutch spring	5	Y	0.0135	Metal
9	F3-400401-0	主离合器垫圈	Main clutch washer	1	Y	0.005	Metal
10	F3-411000-0	主离合器罩组合	Combination of the main clutch cover	1	Y	1.444	Metal
11	F3-413000-0	超越离合器	Clutch	1	Y	0.081	Metal
12	F3-414000-0	主离合器蹄块总成	Main Clutch Shoe Assembly	1	Y	1.732	Metal
13	F3-400851-0	螺母	Nut	1	Y	0.029	Metal
14	F3-400301-0	顶杆	Mandrel	1	Y	0.023	Metal
15	F3-400601-0	O形圈	O-ring	1	Y	0.0001	Rubber
16	F3-200851-0	螺母	Nut	1	Y	0.022	Metal
17	F3-400402-0	锁紧垫圈	Lock washers	1	Y	0.005	Metal
18	F3-423000-0	离合器轮毂组合	Clutch wheel combination	1	N	0.4355	Metal
19	F3-330001-0	导向杆	Guide bar	1	Y	0.021	Metal
20	F3-420402-0	花键垫圈	Spline washer	1	N	0.01	Metal
21	F3-421000-0	离合器齿轮组合	Clutch gear combination	1	Y	1.36	Metal
22	BGB/T 308-8.731G100b	钢球	Ball	1	Y	0.003	Metal
23	F3-401000-0	推杆组合	Putting combinations	1	Y	0.0345	Metal
24	F3-400501-0	辅助衬套	Auxiliary bush	1	Y	0.001	Plastic
25	F3-422000-0	摩擦片	Friction	7	N	0.03	Metal

6. Clutch



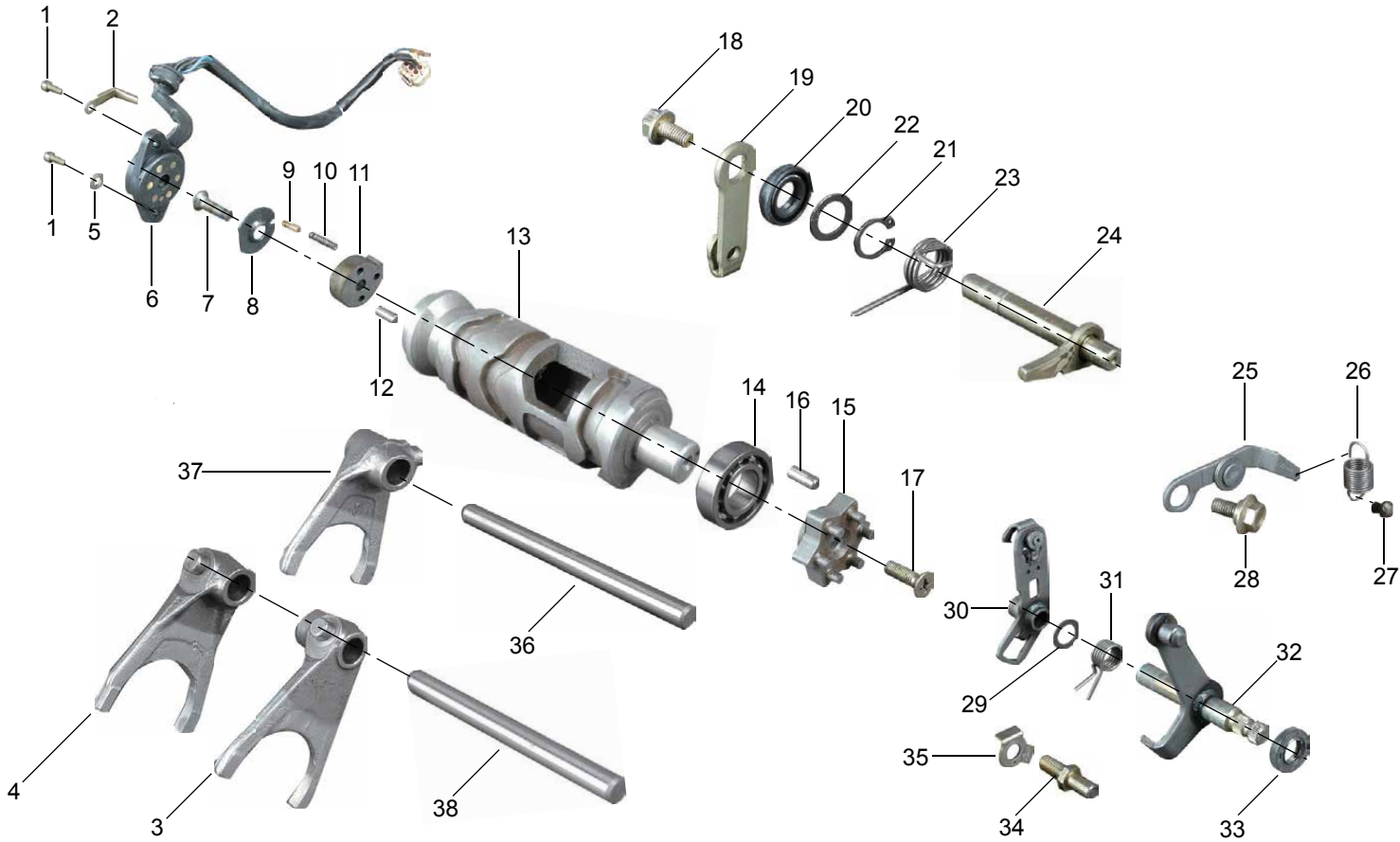
序号 No.	零件代号 Part code	零件名称 Part Name	数量 Amount	是否维修 Y/N Maintenance	重量 Weight	属性 Property	备注 Notes
26	F3-420401-0	离合器片 Clutch	6	N	0.061	Metal	
27	F3-424000-0	带垫螺钉 Screw with pad	5	Y	0.009	Metal	

7. Control, shift cams, fork institutions



序号 No.	零件代号 Part code	零件名称 Part Name	数量 Amount	是否维修 Y/N Maintenance	重量 Weight	属性 Property	备注 Notes
1	BGB/T 70.1-M6×16-52	螺钉	Screw	2	Y	0.0055	Metal
2	F3-500406-0	压线板	Pressure Line board	1	Y	0.0035	Metal
3	F3-500301-0	拨叉 1 (L)	Fork 1 (L)	1	Y	0.081	Metal
4	F3-500303-0	拨叉 3 (R)	Fork 3 (R)	1	Y	0.0805	Metal
5	BGB/T 97.1-6-W2	平垫圈	Flat washer	2	Y	0.0005	Metal
6	F3-D70000-0	挡位传感器	Gear sensor	1	Y	0.068	
7	BGB/T 819.2-M6×20-02	螺钉	Screw	1	Y	0.005	Metal
8	F3-540401-0	挡板	Apron	1	Y	0.002	Metal
9	F3-540851-0	挡位触头	Gear contact	1	Y	0.001	Metal
10	F3-540701-0	弹簧	Spring	1	Y	0.001	Metal
11	F3-540751-0	倒挡限位凸轮	Reverse gear limit cam	1	Y	0.035	Metal
12	F3-540002-0	定位销	Pin	2	Y	0.001	Metal
13	F3-540201-0	换挡凸轮轴	Shifting camshaft	1	Y	0.581	Metal
14	BGB/T 276-6003	深沟球轴承	Deep groove ball bearings	1	Y	0.068	Metal
15	F3-500751-0	星形轮	Star round	1	Y	0.0575	Metal
16	F3-540001-0	定位销	Pin	1	Y	0.001	Metal
17	BGB/T 819.1-M6×20-02	螺钉	Screw	1	Y	0.0045	Metal
18	BGB/T 5789-M6×12-32	螺栓	Bolt	1	Y	0.0045	Metal
19	F3-500402-0	倒挡操纵板	Reverse gear control board	1	Y	0.0145	Metal
20	ZA1-402000-0	油封	Oil seal	1	N	0.002	Rubber
21	BGB/T 894.1-12-B8	轴用弹性挡圈	Axial Spring Collar	1	Y	0.001	Rubber
22	F3-500401-0	垫圈	Washer	1	Y	0.0005	Metal
23	F3-500701-0	扭簧	Torsion spring	1	Y	0.005	Metal
24	F3-501000-0	倒挡操纵轴组合	Reverse gear shaft control portfolio	1	Y	0.086	Metal
25	F3-560000-0	限位杠杆总成	Limit lever assembly	1	N	0.017	Metal

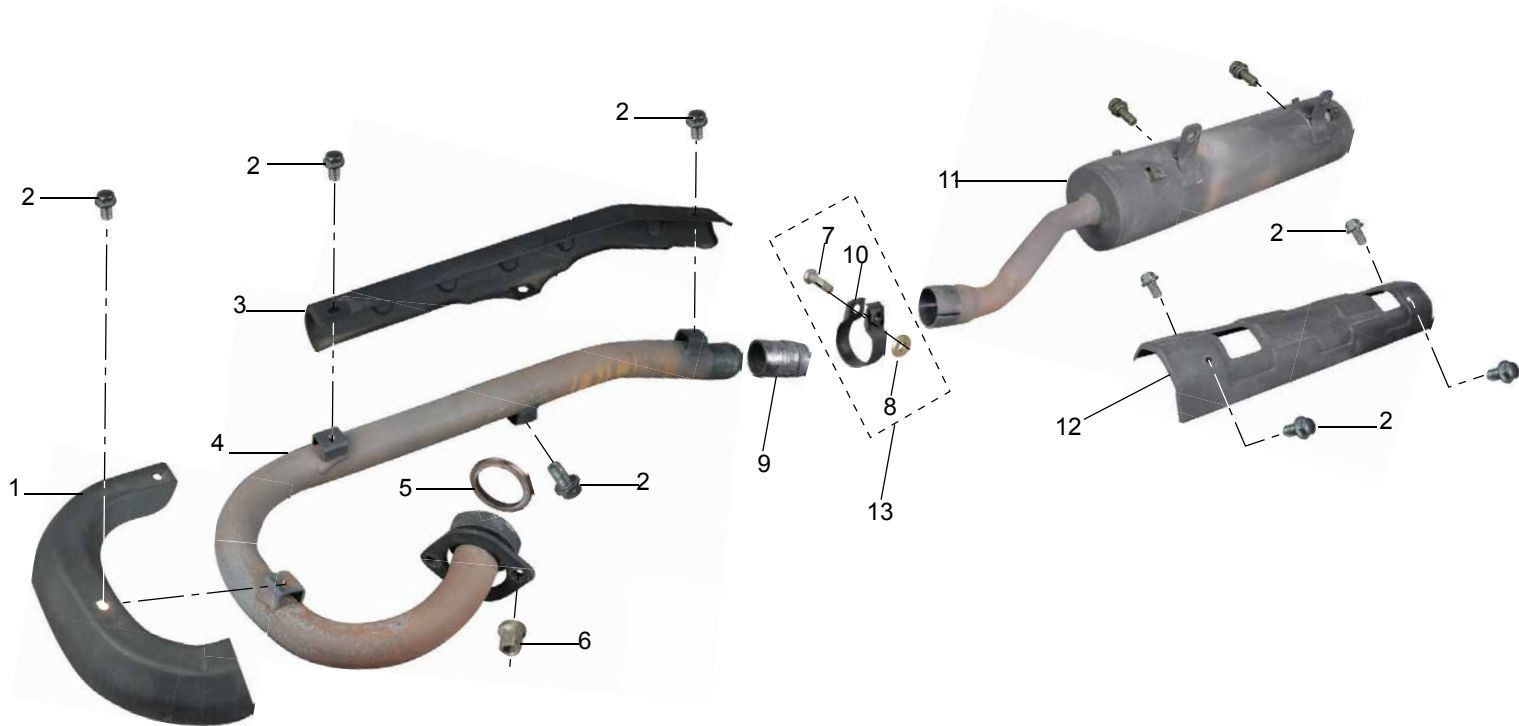
7. Controls, shift cams, fork institutions





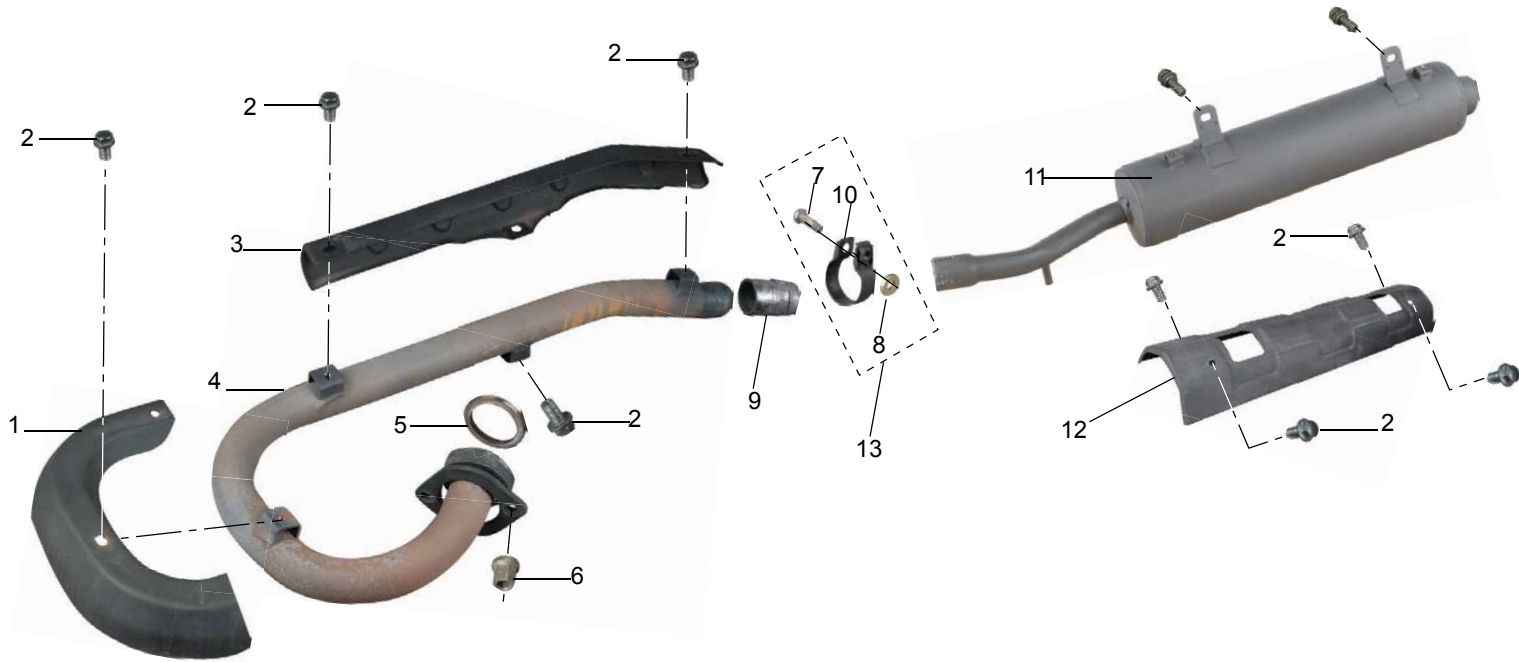
序号 No.	零件代号 Part code	零件名称 Part Name	数量 Amount	是否维修 Y/N Maintenance	重量 Weight	属性 Property	备注 Notes
26	F3-500703-0	拉簧	Extension Spring	1	Y	0.0025	Metal
27	CY80-01-69	弹簧挂销	Spring hanging off	1	Y	0.001	Metal
28	F3-500851-0	螺栓	Bolt	1	Y	0.008	Metal
29	F3-500404-0	垫圈	Washer	1	Y	0.001	Rubber
30	F3-551000-0	换挡杠杆组合	Shift lever combination	1	Y	0.124	Metal
31	F3-550702-0	扭簧	Torsion spring	1	Y	0.0275	Metal
32	F3-530000-0	换挡轴总成	Shift shaft assembly	1	Y	0.175	Metal
33	FG-505000-0	油封	Oil seal	1	N	0.002	Rubber
34	F3-500852-0	扭簧销	Torsion spring pin	1	Y	0.08	Metal
35	F3-500408-0	垫片	Gasket	1	Y	0.002	Metal
36	F3-500002-0	短拨叉轴	Short gear shaft	1	Y	0.071	Metal
37	F3-500302-0	拨叉 2	Fork 2	1	Y	0.066	Metal
38	F3-500001-0	长拨叉轴	Long gear shaft	1	Y	0.085	Metal

8-1. Exhaust Muffler

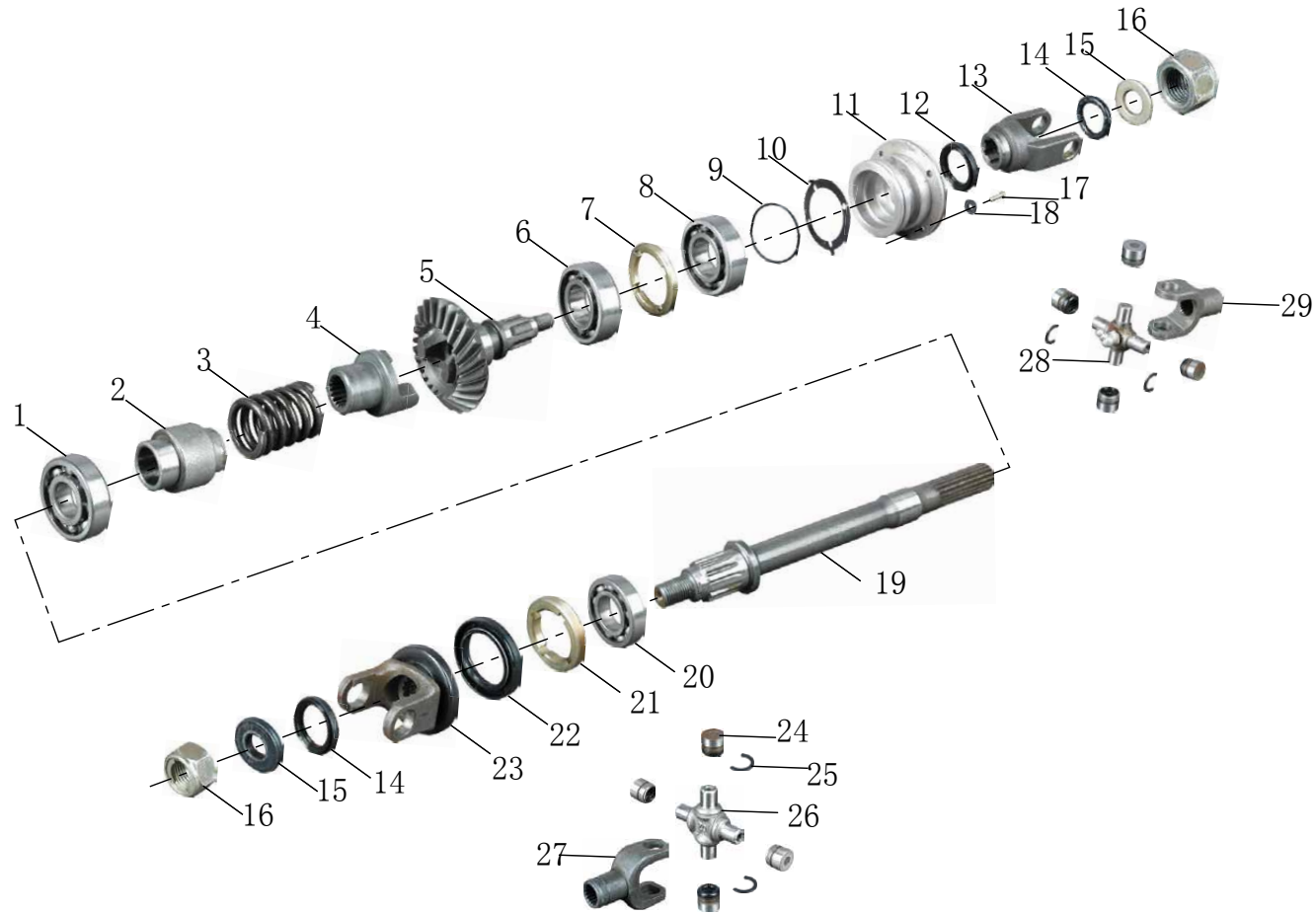


序号 No.	零件代号 Part code	零件名称 Part Name	数量 Amount	是否维修 Y/N Maintenance	重量 Weight	属性 Property	备注 Notes		
1	F3-730401-0	护板1	Nursing Board 1	1	Y	0.207	Plastic		
2	BGB/T5789-M6×12-37	螺栓	Bolt	8	Y	0.004	Metal		
3	F3-730402-0	护板2	2 nursing board	1	Y	0.275	Plastic		
4	F3-740000-0	排气管总成	Exhaust assembly	1	Y	1.14	Metal		
5	F3-702000-0	排气管垫圈	Exhaust pipe gasket	1	Y	0.008	Metal		
6	F3-700851-0	螺母	Nut	2	Y	0.0055	Metal		
7	GB/T29.2-M8×30-21	螺栓	Bolt	1	Y	0.013	Metal		
8	FG-754001-0	凸焊螺母	Welding nuts	1	Y	0.003	Metal		
9	FG-750801-0	排气管密封圈	Exhaust seal ring	1	Y	0.009	Metal		
10	FG-754401-0	卡箍	Clamp	1	Y	0.0325	Metal		
11	F3-750000-0	消声器总成	Muffler assy	1	Y	4.45	Metal	基础	Basis
	F3-750000-F3	消声器总成	Muffler assy	1	Y	4.45	Metal	EPA	EPA
12	F3-730403-0	护板3	Nursing Board 3	1	Y	0.65	Plastic		
13	FG-754000-0	卡箍组合	Clamp Combination	1	Y	0.0485	Metal		

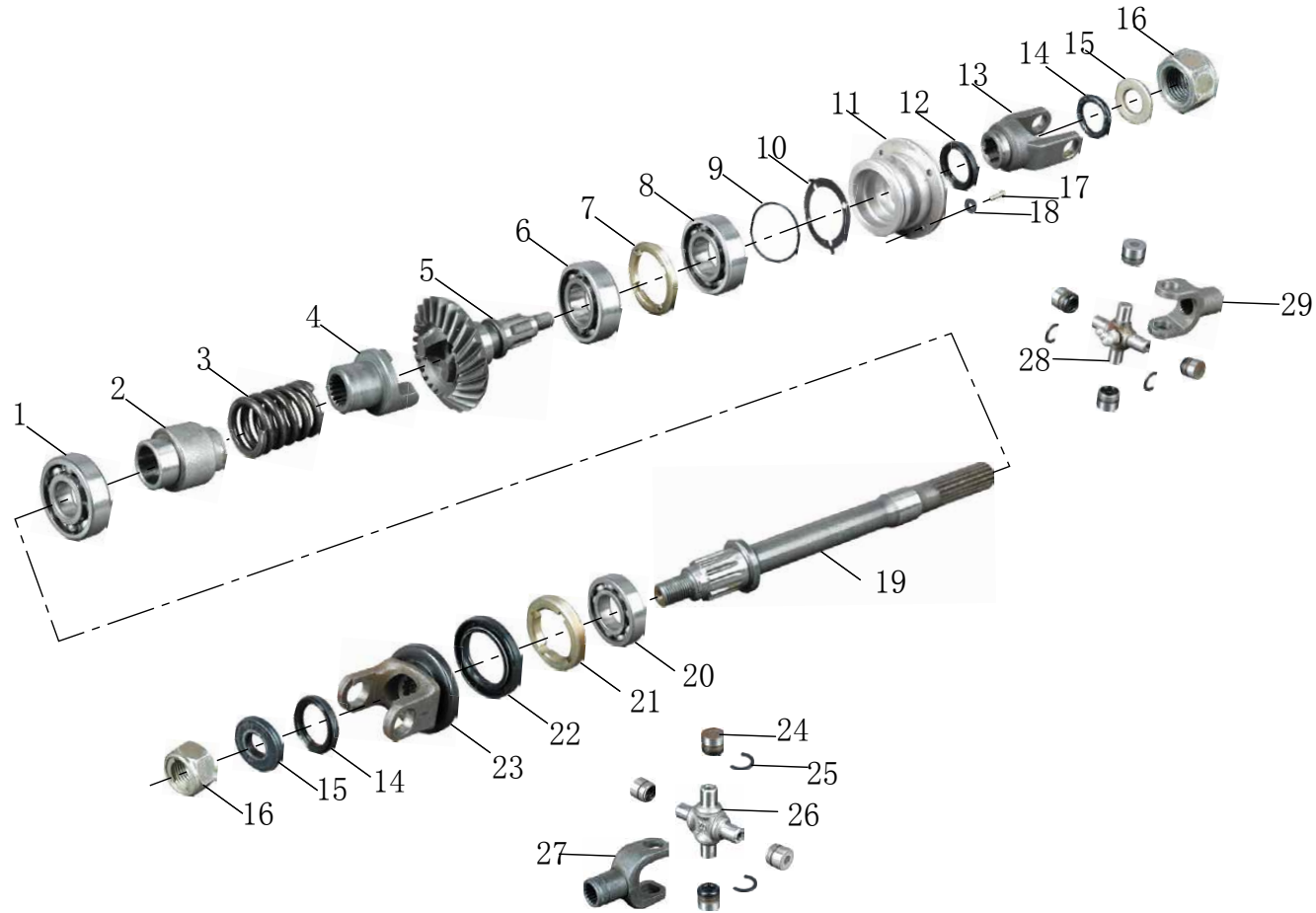
8-2. Exhaust Muffler (European standard)



序号 No.	零件代号 Part code	零件名称 Part Name	数量 Amount	是否维修 Y/N Maintenance	重量 Weight	属性 Property	备注 Notes
1	F3-730401-0	护板1 Nursing Board 1	1	Y	0.207	Plastic	
2	BGB/T5789-M6×12-37	螺栓 Bolt	8	Y	0.004	Metal	
3	F3-730402-0	护板2 2 nursing board	1	Y	0.275	Plastic	
4	F3-740000-0	排气管总成 Exhaust assembly	1	Y	1.14	Metal	
5	F3-702000-0	排气管垫圈 Exhaust pipe gasket	1	Y	0.008	Metal	
6	F3-700851-0	螺母 Nut	2	Y	0.0055	Metal	
7	GB/T29.2-M8×30-21	螺栓 Bolt	1	Y	0.013	Metal	
8	FG-754001-0	凸焊螺母 Welding nuts	1	Y	0.003	Metal	
9	FG-750801-0	排气管密封圈 Exhaust seal ring	1	Y	0.009	Metal	
10	FG-754401-0	卡箍 Clamp	1	Y	0.0325	Metal	
11	F3-750000-F2	消声器总成 Muffler assy	1	Y	4.45	Metal	
12	F3-730403-0	护板3 Nursing Board 3	1	Y	0.65	Plastic	
13	FG-754000-0	卡箍组合 Clamp Combination	1	Y	0.0485	Metal	



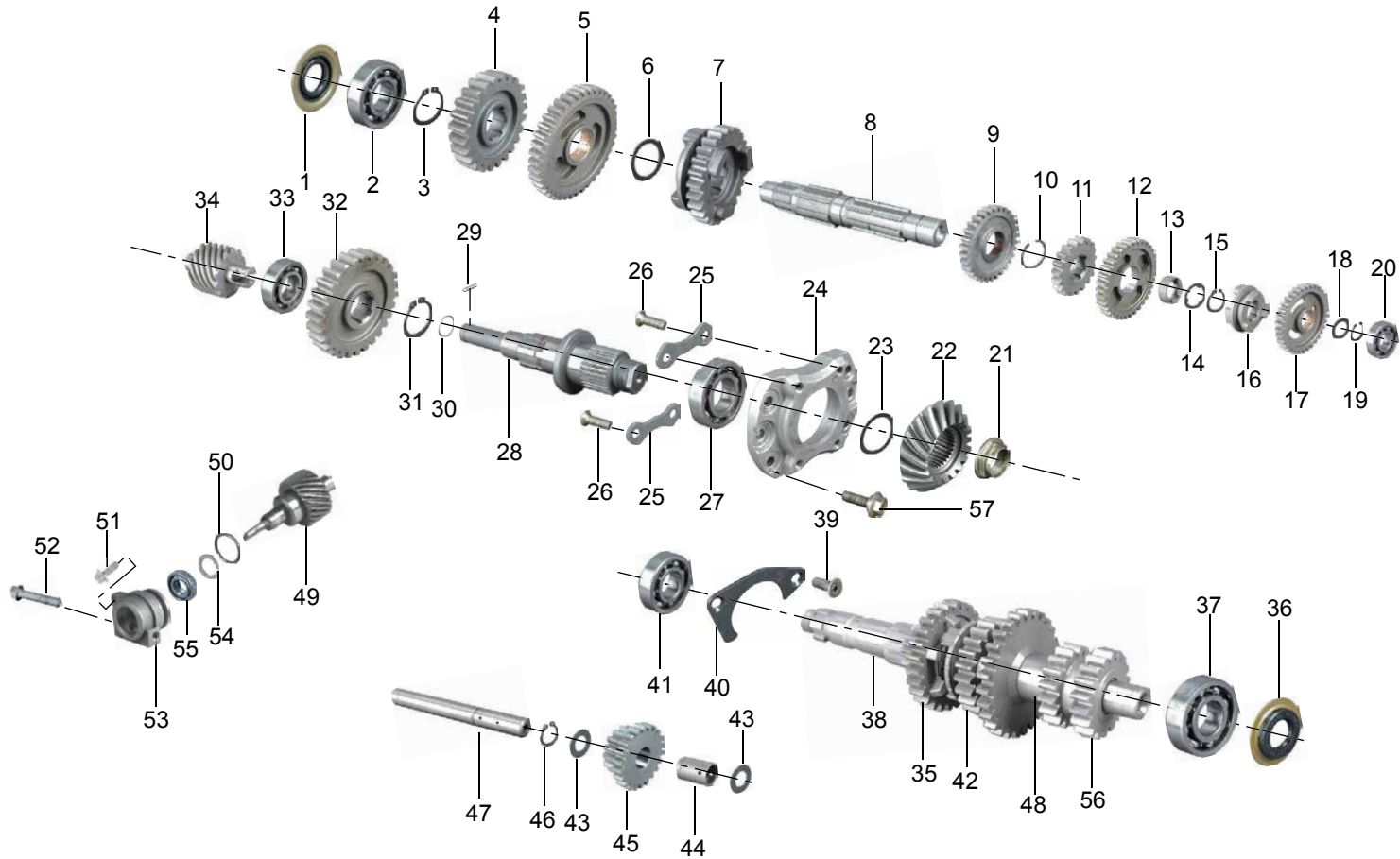
序号 No.	零件代号 Part code	零件名称 Part Name	数量 Amount	是否维修 Y/N Maintenance	重量 Weight	属性 Property	备注 Notes	
1	BGB/T 276-6006-C3	深沟球轴承	1	Y	0.089	Metal		
2	F3-580001-0	衬套	1	Y	0.198	Metal		
3	F3-580701-0	弹簧	1	Y	0.143	Metal		
4	F3-580301-0	连接爪	1	Y	0.155	Metal		
5	F3-581301-0	从动锥齿轮轴	1	Y	0.911	Metal		
6	BGB/T 276-6207-C3	深沟球轴承	1	Y	0.285	Metal		
7	F3-581851-0	异型螺套	1	Y	0.1065	Metal		
8	BGB/T 276-6305	深沟球轴承	1	Y	0.295	Metal		
9	F3-581601-0	O形圈	1	Y	0.002	Rubber		
10	F3-580405-0	调整垫片	1	Y	0.01	Metal		
11	F3-581201-0	后盖	1	Y	0.5775	Metal		
12	F3-583000-0	油封	1	N	0.015	Rubber		
13	F3-580303-0	万向接前接头	1	Y	0.4245	Metal	后驱	After the drive
14	F3-580601-0	O形圈	2	Y	0.001	Rubber		
15	F3-580402-0	垫片	2	Y	0.024	Metal		
16	BGB/T 6186-M14×1.5-32	螺母	2	Y	0.021	Metal		
17	BGB/T 5783-M8×30-32	六角头螺栓	4	Y	0.0145	Metal		
18	BGB/T 97.1-8-W2	平垫圈	4	Y	0.001	Metal		
19	F3-580302-0	传动轴	1	Y	0.646	Metal	前驱	Precursor
20	BGB/T 276-6205	深沟球轴承	1	Y	0.1265	Metal		
21	FG-583851-0	异形螺套	1	Y	0.0345	Metal		
22	F3-582000-0	油封	1	Y	0.015	Rubber		
23	F3-580401-0	防尘盖	1	Y	0.445			
24	FG-586000-0	滚针轴承	8	Y	0.022	Metal		
25	FG-580402-0	卡圈	8	Y	0.0005	Metal		





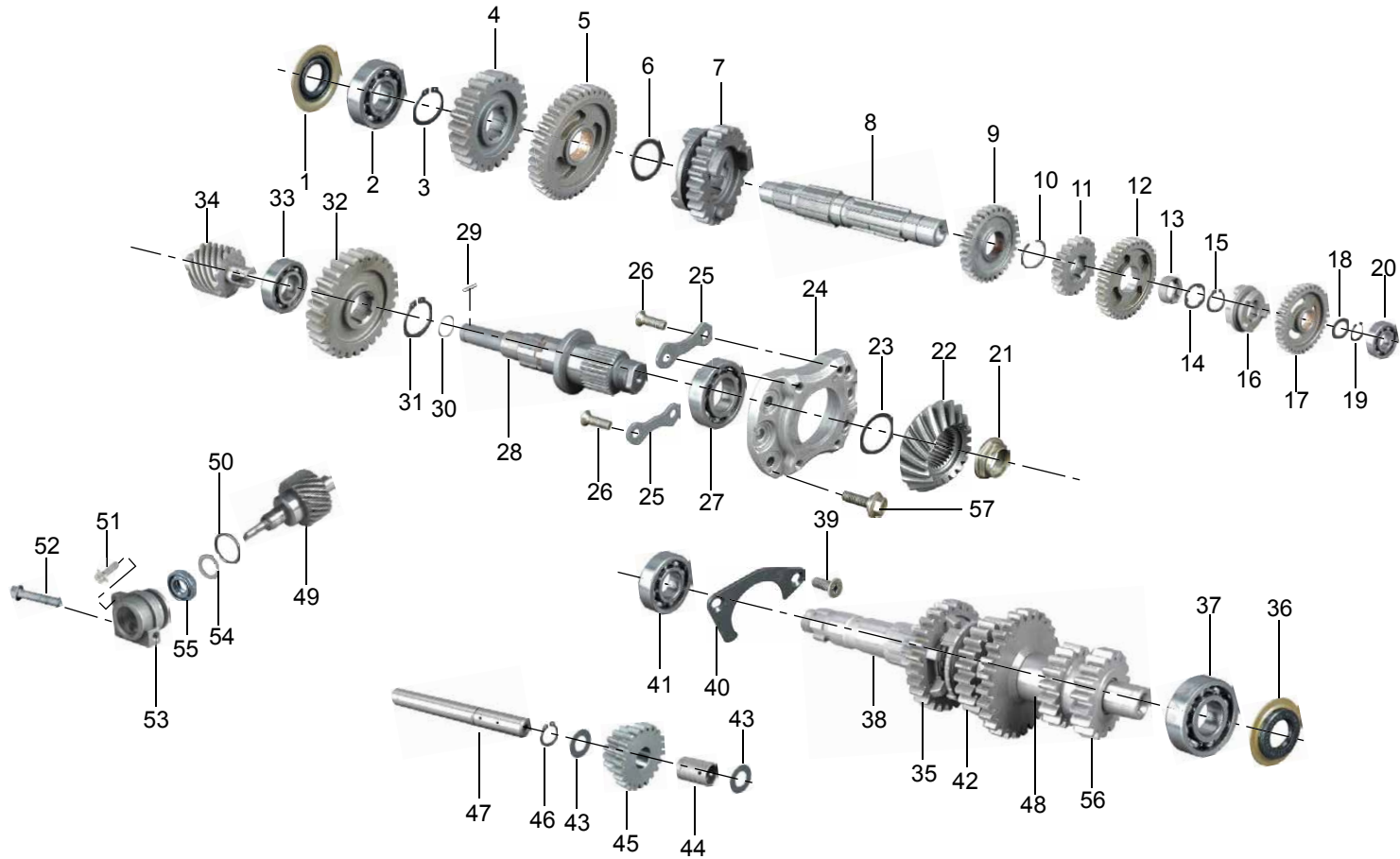
序号 No.	零件代号 Part code	零件名称 Part Name	数量 Amount	是否维修 Y/N Maintenance	重量 Weight	属性 Property	备注 Notes
26	F3-584000-0	十字轴组合 Cross axis combination	1	N	0.1055	Metal	
27	F3-586000-0	万向接后接头组合 After the joint universal joint assy	1	Y	0.343	Metal	前驱 Precursor
28	FG-580305-0	传动叉 Transmission fork	1	Y	0.0825	Metal	
29	F3-580304-0	万向接后接头 After the joint universal joint	1	Y	0.343	Metal	后驱 After the drive

10. Change Gear Sector



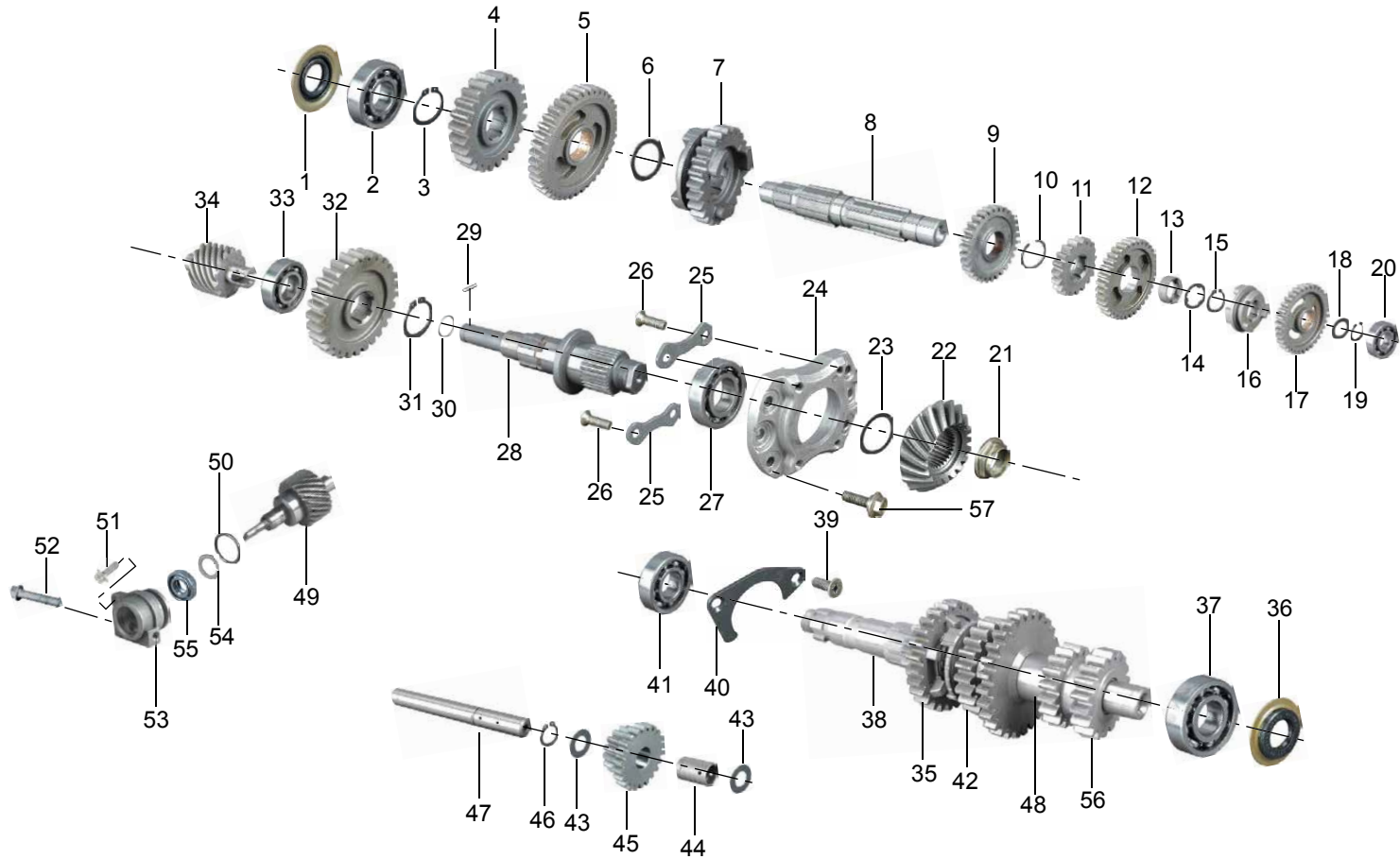
序号 No.	零件代号 Part code	零件名称 Part Name	数量 Amount	是否维修 Y/N Maintenance	重量 Weight	属性 Property	备注 Notes
1	F3-504000-0	驱动轴油封 Drive shaft oil seal	1	N	0.009	Metal	
2	BGB/T 276-6304	深沟球轴承 Deep groove ball bearings	1	Y	0.068	Metal	
3	BGB/T 894.2-26-B8	轴用弹性挡圈 Axial Spring Collar	1	Y	0.002	Metal	
4	F3-520306-0	驱动齿轮 Drive gear	1	Y	0.3325	Metal	
5	F3-522000-0	一档从动齿轮组合 A combination of gear assy	1	Y	0.4	Metal	
6	F3-520401-0	垫圈 Washer	1	Y	0.002	Rubber	
7	F3-520303-0	四挡从动齿轮 Sidang driven gear	1	Y	0.2535	Metal	
8	F3-521000-0	驱动轴组合 Drive shaft combination	1	N	0.524	Metal	
9	F3-520302-0	三挡从动齿轮 Third gear driven gear	1	Y	0.2005	Metal	
10	F3-520402-0	开口挡圈 Ring opening	1	Y	0.001	Metal	
11	F3-520304-0	五挡从动齿轮 5 gear driven gear	1	Y	0.145	Metal	
12	F3-520305-0	倒挡齿轮 Reverse Gear Gear	1	Y	0.286	Metal	
13	F3-520001-0	花键衬套 Spline bushing	1	Y	0.013	Metal	
14	F3-520404-0	花键垫圈 Spline washer	1	Y	0.002	Metal	
15	F3-520403-0	挡圈 Ring	1	Y	0.002	Metal	
16	F3-520307-0	拨叉爪 Fork claw	1	Y	0.163	Metal	
17	F3-524000-0	二挡从动齿轮组合 Second gear driven gear assy	1	Y	0.2045	Metal	
18	F3-520406-0	垫圈 Washer	1	Y	0.002	Metal	
19	ZA1-500402-0	挡圈 Ring	1	Y	0.001	Metal	
20	BGB/T 276-6204	深沟球轴承 Deep groove ball bearings	1	Y	0.068	Metal	
21	F3-580852-0	螺母M22×1 Nut M22 × 1	1	Y	0.024	Metal	
22	F3-580307-0	主动锥齿轮 Bevel Gear	1	Y	0.299	Metal	
23	F3-580410-0	调整垫片 Adjustment washer	1	Y	0.001	Metal	
24	F3-500202-0	过轮轴轴承座 Off wheel bearing	1	Y	0.145	Metal	
25	F3-500409-0	压板 Plate	2	Y	0.021	Metal	

10. Change Gear Sector



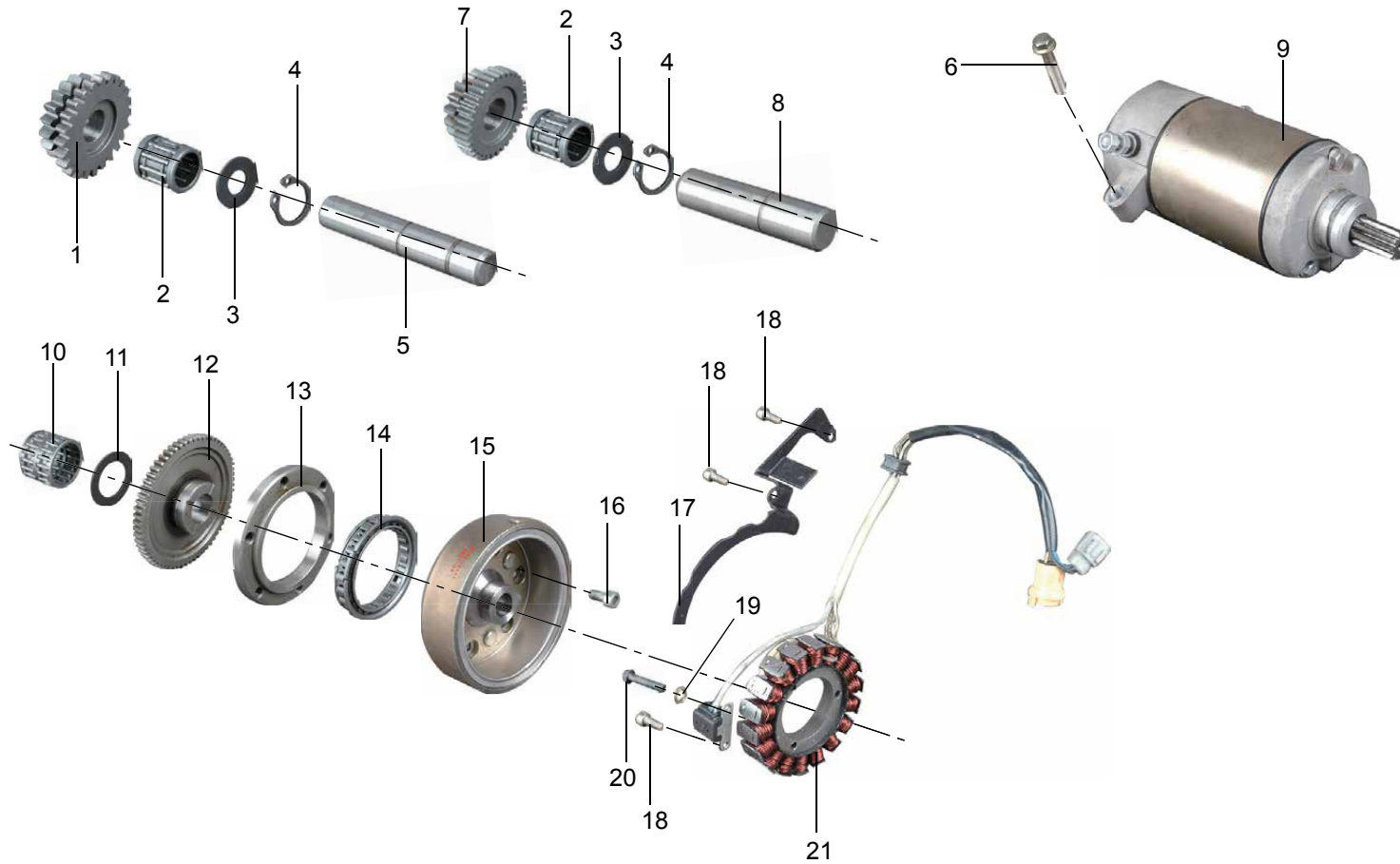
序号 No.	零件代号 Part code	零件名称 Part Name	数量 Amount	是否维修 Y/N Maintenance	重量 Weight	属性 Property	备注 Notes
26	BGB/T 819.1-M8×25-02	螺钉 Screw	4	Y	0.01	Metal	
27	BGB/T 276-6206-C2	深沟球轴承 Deep groove ball bearings	1	Y	0.295	Metal	
28	F3-570302-0	过轮轴 Through axle	1	Y	0.53	Metal	
29	F3-570001-0	传动销 Drive sales	1	Y	0.0001	Metal	
30	F3-570701-0	传动销 Drive sales	1	Y	0.0001	Metal	
31	BGB/T 894.2-26-B8	轴用弹性挡圈 Axial Spring Collar	1	Y	0.001	Metal	
32	F3-570301-0	驱动过轮 Drive over wheel	1	Y	0.476	Metal	
33	BGB/T 276-6004	深沟球轴承 Deep groove ball bearings	1	Y	0.098	Metal	
34	F3-500304-0	转速驱动齿轮 Speed driving gear	1	Y	0.047	Metal	
35	F3-510304-0	四挡主动齿轮 Si Dang gear	1	Y	0.078	Metal	
36	F3-503000-0	主轴油封 Spindle seal	1	N	0.009	Rubber	
37	BGB/T 276-6203	深沟球轴承 Deep groove ball bearings	1	Y	0.061	Metal	
38	F3-510301-0	主轴 Spindle	1	Y	0.922	Metal	
39	BGB/T 819.1-M6×16-02	螺钉 Screw	2	Y	0.0035	Metal	
40	F3-500403-0	主轴轴承压板 Spindle bearing plate	1	Y	0.022	Metal	
41	F3-505000-0	轴承 ( 50×22×14 ) Bearings ( 50 × 22 × 14 )	1	N	0.092	Metal	
42	F3-510305-0	五挡主动齿轮 Five-block drive gear	1	Y	0.084	Metal	
43	F3-500405-0	垫圈 Washer	2	Y	0.001	Metal	
44	F3-500003-0	衬套 Bush	1	Y	0.014	Metal	
45	F3-500306-0	倒挡双连齿轮 Reverse Gear Double Gear	1	Y	0.2155	Metal	
46	BGB/T 894.2-15-B8	轴用弹性挡圈 Axial Spring Collar	1	Y	0.0005	Metal	
47	F3-500004-0	倒挡轴 Reverse gear shaft	1	Y	0.157	Metal	
48	F3-510001-0	轴套 Sleeve	1	Y	0.025	Metal	
49	F3-500305-0	转速从动齿轮 Speed driven gear	1	Y	0.0635	Metal	
50	F3-500601-0	O形圈 O-ring	1	Y	0.0002	Rubber	

10. Change Gear Sector



序号 No.	零件代号 Part code	零件名称 Part Name	数量 Amount	是否维修 Y/N Maintenance	重量 Weight	属性 Property	备注 Notes
51	BQ/JR YP80-M6×16-26	螺栓 Bolt	1	Y	0.005	Metal	
52	BGB/T 5783-M6×30-32	六角头螺栓 Hexagon head bolt	1	Y	0.008	Metal	
53	F3-500201-0	转速齿轮座 Speed gear housing	1	Y	0.0315	Metal	
54	F3-500407-0	垫圈 Washer	1	Y	0.0005	Metal	
55	F3-502000-0	转速齿轮油封 Speed gear oil seal	1	N	0.001	Metal	
56	F3-510302-0	二挡主动齿轮 Second gear gear	1	Y	0.091	Metal	
57	BGB/T 5789-M8×30-32	螺栓 Bolt	6	Y	0.005	Metal	

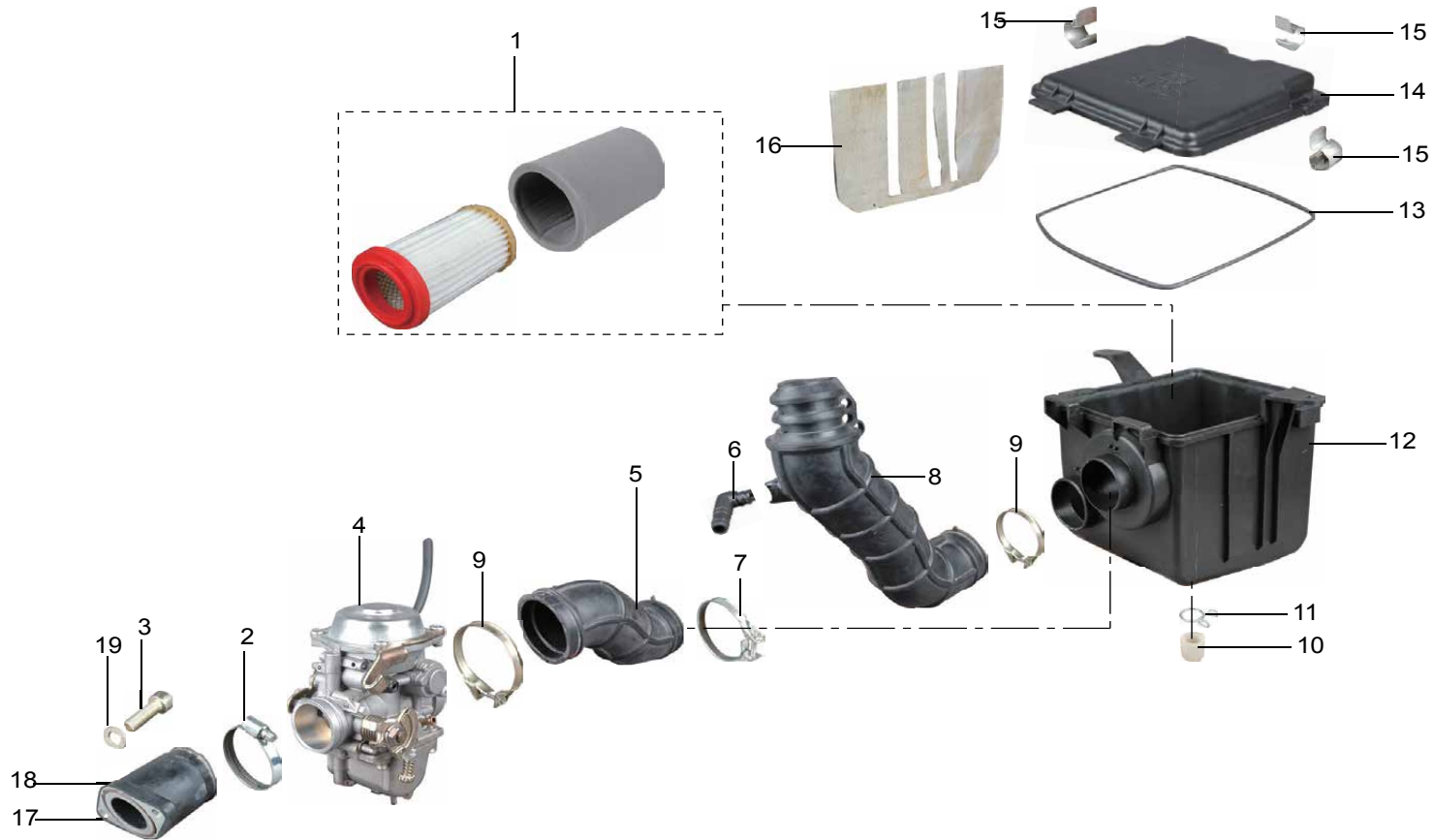
11. Electric Starter Institutions





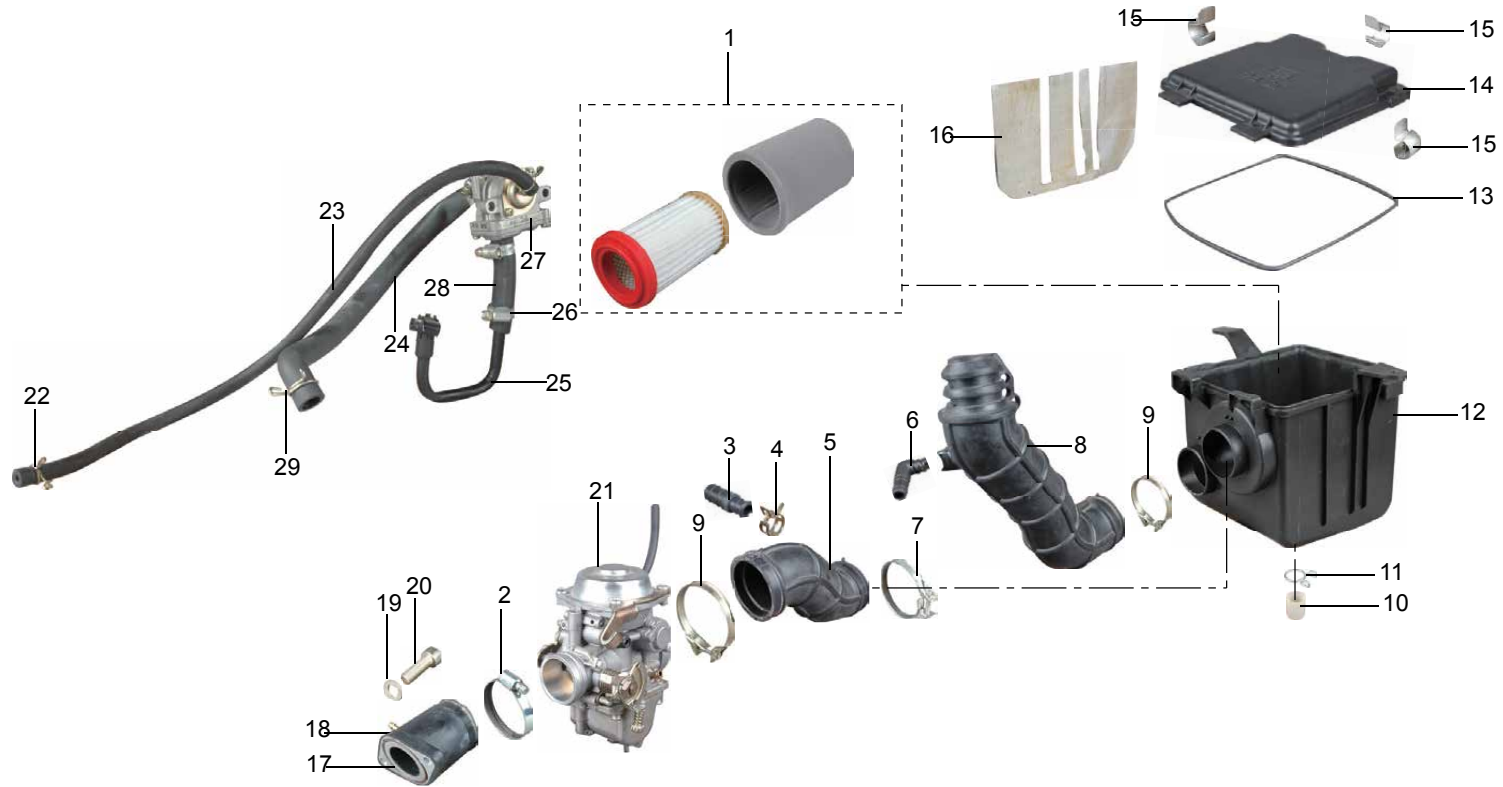
序号 No.	零件代号 Part code	零件名称 Part Name	数量 Amount	是否维修 Y/N Maintenance	重量 Weight	属性 Property	备注 Notes
1	F3-800302-0	双连过轮2	Double-off round 2	1	Y	0.1495	Metal
2	F3-803000-0	滚针轴承1	Needle Roller Bearing 1	2	N	0.0085	Metal
3	F3-800401-0	垫圈	Washer	2	Y	0.0035	Rubber
4	BGB/T 894.1-12-B8	轴用弹性挡圈	Axial Spring Collar	2	Y	0.001	Metal
5	F3-800002-0	过轮轴2	Through axle 2	1	Y	0.058	Metal
6	BQ/JR YP80-M6×30-26	螺栓	Bolt	2	Y	0.0075	Metal
7	F3-800301-0	双连过轮1	Double-off round 1	1	Y	0.113	Metal
8	F3-800001-0	过轮轴1	Through axle 1	1	Y	0.043	Metal
9	F3-D60000-0	起动机	Starting Motor	1	Y	1.543	Metal
10	F3-804000-0	滚针轴承2	Needle roller bearings 2	1	N	0.024	Metal
11	F3-800402-0	垫圈	Washer	1	Y	0.005	Metal
12	F3-860000-0	电起大齿轮组合	Combination of a large electric starter gear	1	N	0.819	Metal
13	F3-800003-0	超越离合器盘	Clutch plate	1	Y	0.339	Metal
14	F3-830000-0	超越离合器	Clutch	1	N	0.094	Metal
15	F3-D52000-0	磁电机转子	Magneto Rotor	1	Y	2.03	Metal
16	BGB/T 70.1-M8×14-52	螺钉	Screw	6	Y	0.011	Metal
17	F3-800403-0	压板1	Plate 1	1	Y	0.015	Plastic
18	BGB/T 70.1-M5×12-52	螺钉	Screw	4	Y	0.003	Metal
19	BGB/T 93-6-B2	垫圈	Washer	3	Y	0.0005	Metal
20	BQ/JR YP81-M6×30-21	螺栓	Bolt	3	Y	0.008	Metal
21	F3-D51000-0	磁电机定子	Magnetic Motor	1	Y	0.79	

12-1. Air Filter



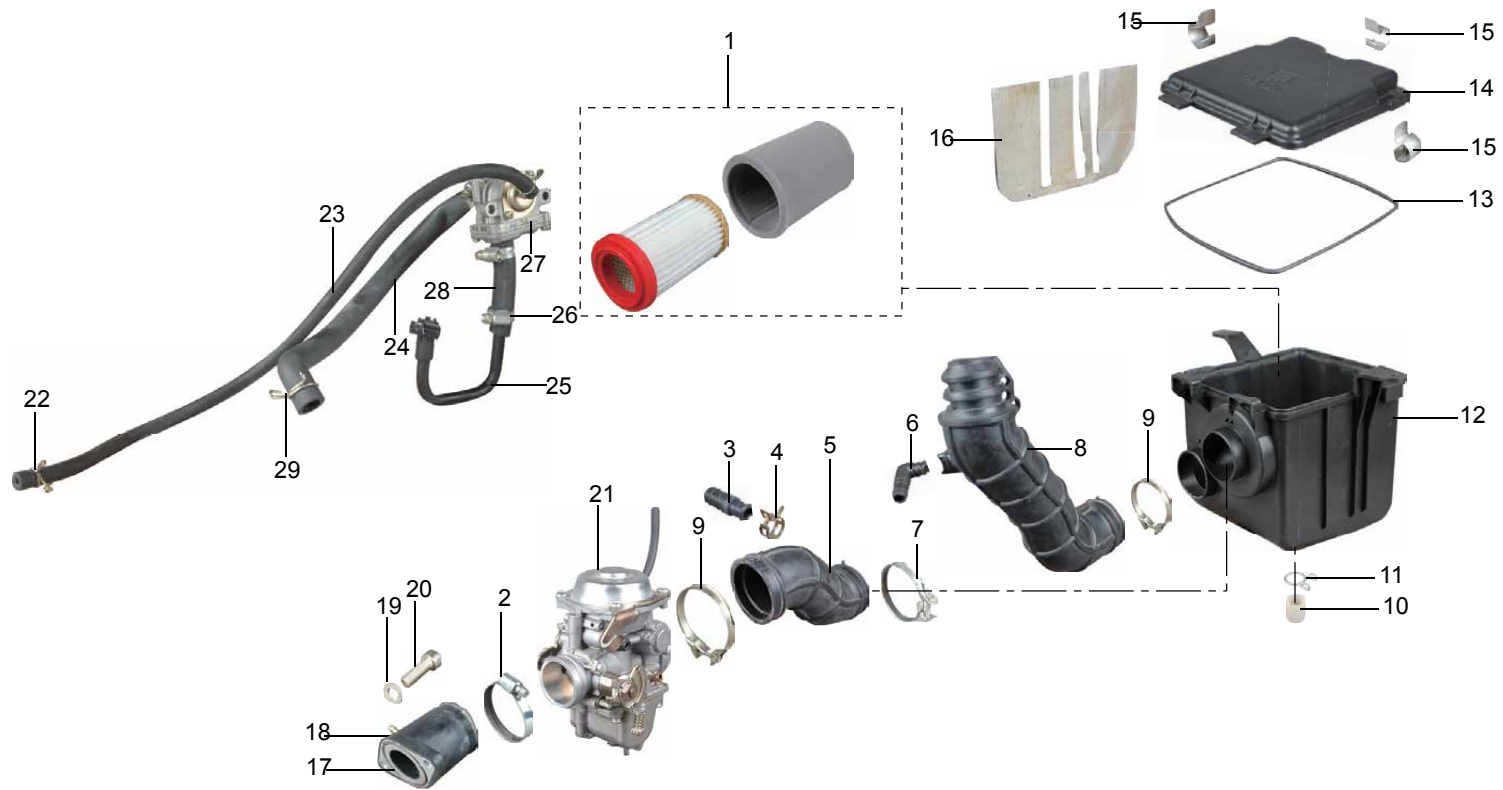
序号 No.	零件代号 Part code	零件名称 Part Name	数量 Amount	是否维修 Y/N Maintenance	重量 Weight	属性 Property	备注 Notes
1	FG-711000-0	滤芯组合 Filter combination	1	Y	0.131	Plastic	
2	F3-703000-0	管夹组合 Portfolio management folder	1	N	0.017	Metal	
3	BGB/T 70.1-M8×25-52	螺钉 Screw	2	Y	0.015	Metal	
4	F3-720000-0	化油器 Carburettor	1	Y	0.8425	Metal	
5	F3-710602-0	化油器连接管 Carburetor connecting pipe	1	Y	0.149	Plastic	
6	FG-710501-0	通气管弯头 Flue elbow	1	Y	0.004	Plastic	
7	FG-713000-0	管夹组合 Pipe clip combination	1	Y	0.017	Metal	
8	F3-710601-0	进气管 Intake Manifolds	1	Y	0.285	Plastic	
9	FG-712000-0	进气管管夹组合 Tracheal tube into the portfolio folder	2	Y	0.015	Metal	
10	FG-710504-0	集尘杯 Dust cup	1	Y	0.008	Plastic	
11	FG-710701-0	钢丝夹 Wire clip	1	Y	0.003	Metal	
12	FG-710503-0	空滤器体 Air Filter Body	1	Y	0.375	Plastic	
13	FG-710603-0	密封圈 Ring	1	Y	0.011	Rubber	
14	FG-710502-0	空滤器盖 Air filter cover	1	Y	0.1205	Plastic	
15	FG-710401-0	空滤器盖锁片 Air filter cover locking pieces	3	Y	0.009	Metal	
16	FG-710801-0	隔热垫 Heat pad	1	Y	0.005		
17	F3-700601-0	O形圈 O-ring	1	Y	0.0005	Rubber	
18	F3-701000-0	化油器座组合 Block carburetor combination	1	N	0.1785	Metal	
19	F3-700401-0	垫圈 Washer	2	Y	0.0007	Metal	

12-2. Air Filter (European Standard)



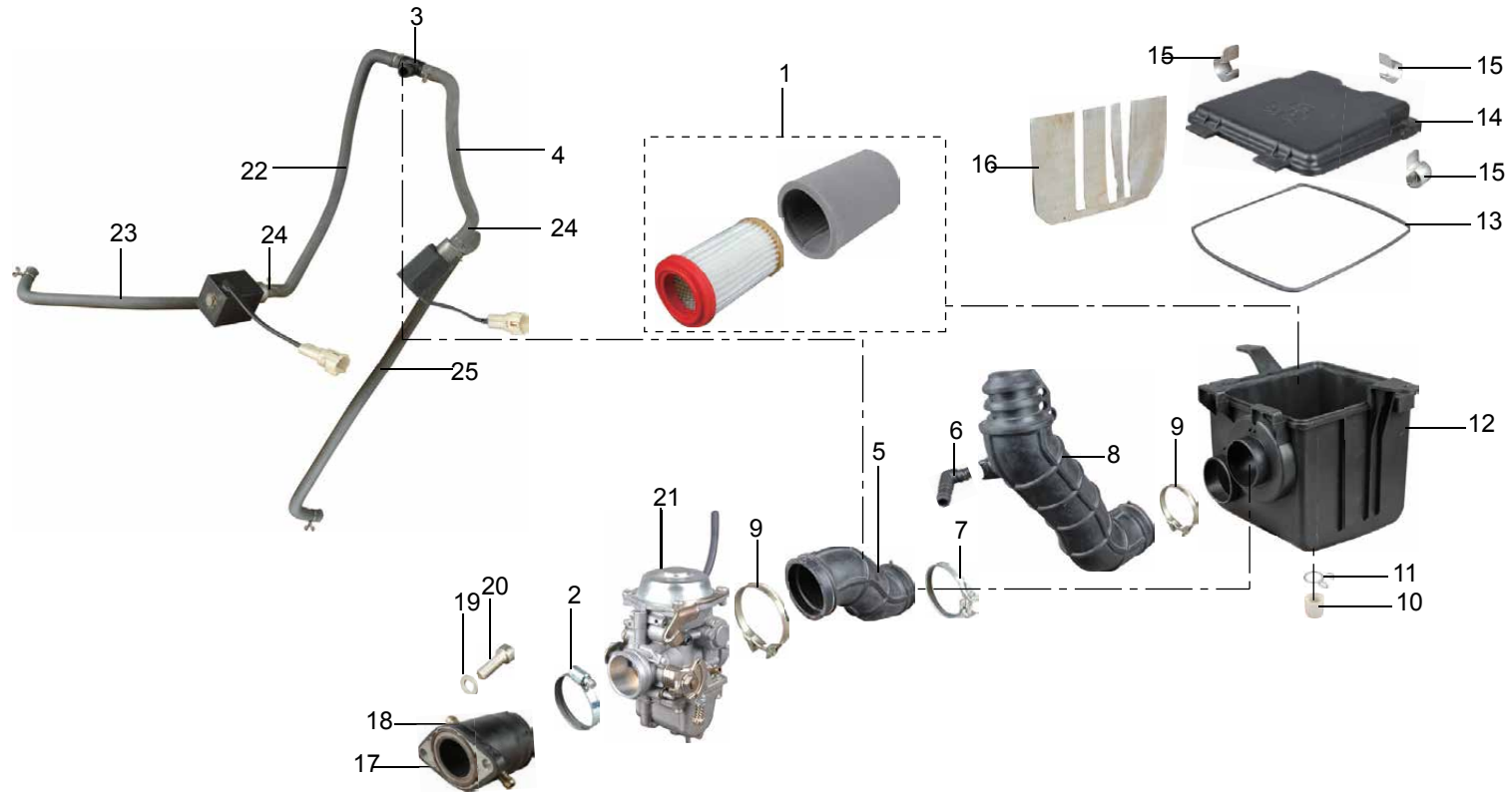
序号 No.	零件代号 Part code	零件名称 Part Name	数量 Amount	是否维修 Y/N Maintenance	重量 Weight	属性 Property	备注 Notes
1	FG-711000-0	滤芯组合 Filter combination	1	Y	0.131	Plastic	
2	F3-703000-0	管夹组合 Pipe clip combination	1	N	0.017	Metal	
3	F3-710501-F2	通气管 Snorkel	1	Y	0.002	Plastic	
4	F3-710702-F2	卡夹 Card holder	1	Y	0.004	Metal	
5	F3-710602-F3	化油器连接管 Carburetor connecting pipe	1	Y	0.149	Plastic	
6	FG-710501-0	通气管弯头 Flue elbow	1	Y	0.004	Plastic	
7	FG-713000-0	管夹组合 Pipe clip combination	1	Y	0.017	Metal	
8	F3-710601-0	进气管 Intake Manifolds	1	Y	0.285	Plastic	
9	FG-712000-0	进气管管夹组合 Tracheal tube into the portfolio folder	2	Y	0.015	Metal	
10	FG-710504-0	集尘杯 Dust cup	1	Y	0.008	Plastic	
11	FG-710701-0	钢丝夹 Wire clip	1	Y	0.003	Metal	
12	FG-710503-0	空滤器体 Air Filter Body	1	Y	0.375	Plastic	
13	FG-710603-0	密封圈 Ring	1	Y	0.011	Rubber	
14	FG-710502-F2	空滤器盖 Air filter cover	1	Y	0.1205	Plastic	
15	FG-710401-0	空滤器盖锁片 Air filter cover locking pieces	3	Y	0.009	Metal	
16	FG-710801-0	隔热垫 Heat pad	1	Y	0.005		
17	F3-700601-0	O形圈 O-ring	1	Y	0.0005	Rubber	
18	F3-701000-F2	化油器座组合 Block carburetor combination	1	N	0.1785	Metal	
19	F3-700401-0	垫圈 Washer	2	Y	0.0007	Metal	
20	BGB/T 70.1-M8×25-52	螺钉 Screw	2	Y	0.015	Metal	
21	F3-720000-F2	化油器 Carburettor	1	Y	0.8425	Metal	
22	F15-700701-0	钢丝夹1 Wire clip 1	2	Y	0.0004	Metal	
23	F15-700602-0	负压管 Vacuum tube	1	Y	0.0515	Rubber	
24	F3-700606-F2	气管1 Trachea 1	1	Y	0.1165	Rubber	
25	F3-704000-F2	补气管组合 Combination of the intake pipe	1	Y	0.1245	Rubber	

12-2. Air Filter (European Standard)



序号 No.	零件代号 Part code	零件名称 Part Name	数量 Amount	是否维修 Y/N Maintenance	重量 Weight	属性 Property	备注 Notes
26	F15-705000-0	卡箍组合2	Clamp Combination 2	3	Y	0.014	Metal
27	EFB-760000-0	补气阀	Fill valve	1	Y	0.1475	Metal
28	F3-700607-F2	气管2	Trachea 2	1	Y	0.0165	Rubber
29	F15-700703-0	钢丝夹3	Wire clip 3	1	Y	0.0035	Metal

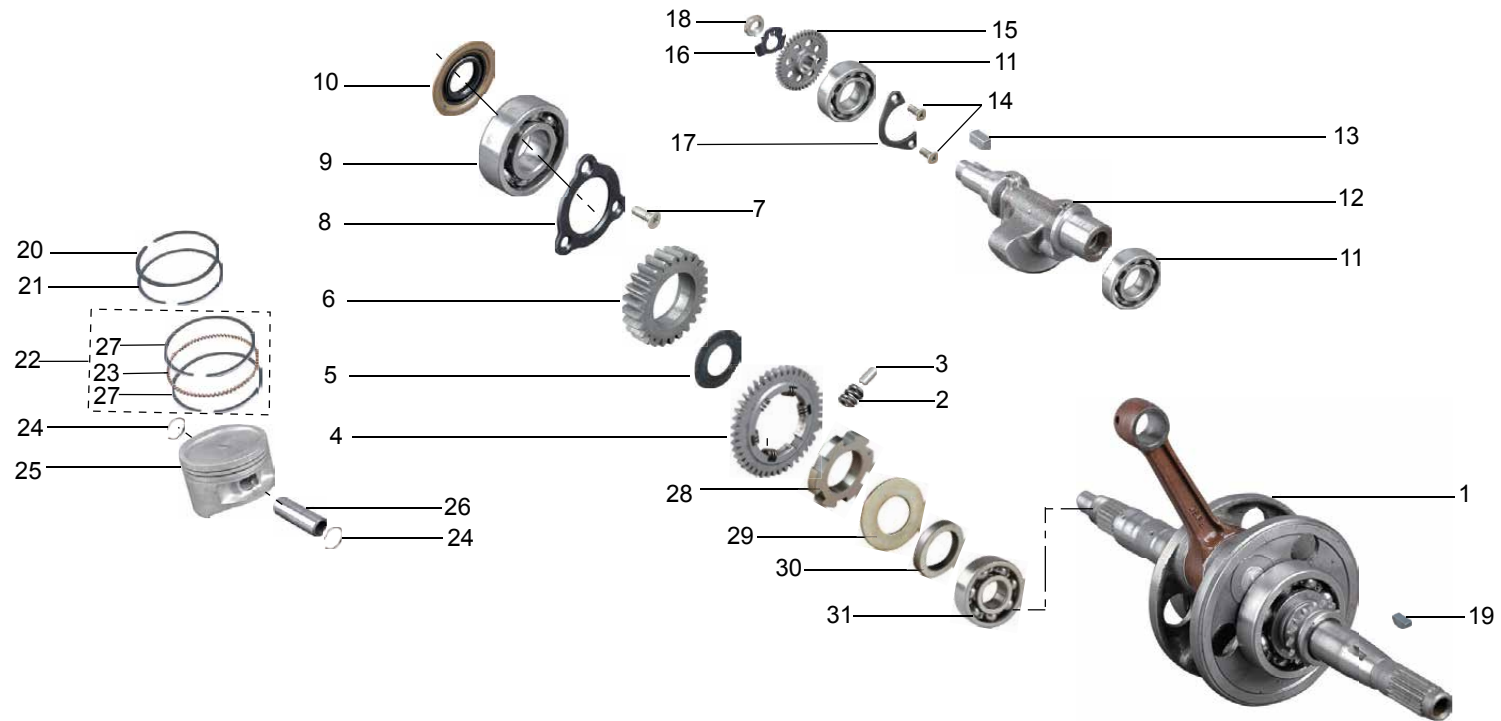
12-3. Air Filter (EPA)





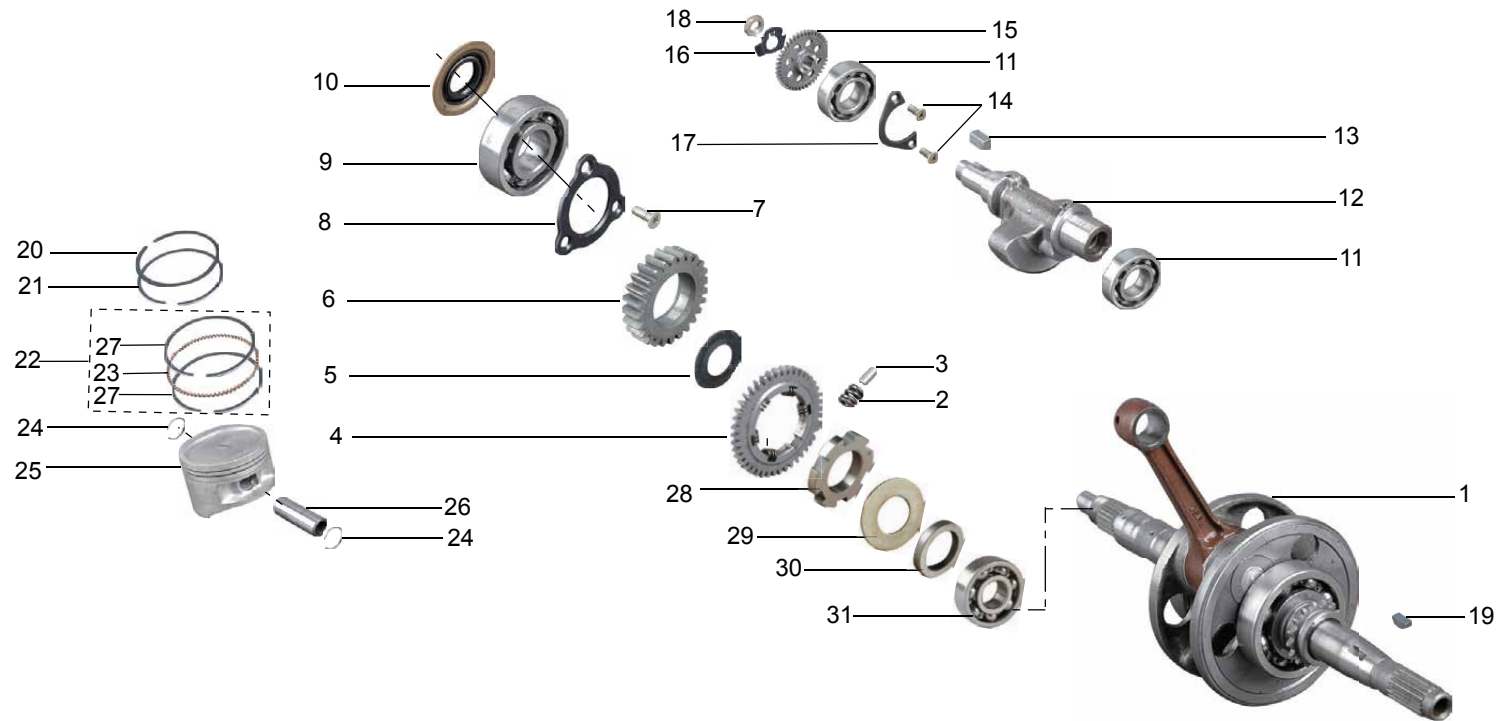
序号 No.	零件代号 Part code	零件名称 Part Name	数量 Amount	是否维修 Y/N Maintenance	重量 Weight	属性 Property	备注 Notes
1	FG-711000-0	滤芯组合 Filter combination	1	Y	0.131	Plastic	
2	F3-703000-0	管夹组合 Pipe clip combination	1	N	0.017	Metal	
3	F3-710501-F3	三通管 Tee	1	Y	0.015	Metal	
4	F3-700605-F3	气管3 Trachea 3	1	Y	0.0268	Rubber	
5	F3-710602-F3	化油器连接管 Carburetor connecting pipe	1	Y	0.149	Plastic	
6	FG-710501-0	通气管弯头 Flue elbow	1	Y	0.004	Plastic	
7	FG-713000-0	管夹组合 Pipe clip combination	1	Y	0.017	Metal	
8	F3-710601-0	进气管 Intake Manifolds	1	Y	0.285	Plastic	
9	FG-712000-0	进气管管夹组合 Tracheal tube into the portfolio folder	2	Y	0.015	Metal	
10	FG-710504-0	集尘杯 Dust cup	1	Y	0.008	Plastic	
11	FG-710701-0	钢丝夹 Wire clip	1	Y	0.003	Metal	
12	FG-710503-0	空滤器体 Air Filter Body	1	Y	0.375	Plastic	
13	FG-710603-0	密封圈 Ring	1	Y	0.011	Rubber	
14	FG-710502-0	空滤器盖 Air filter cover	1	Y	0.1205	Plastic	
15	FG-710401-0	空滤器盖锁片 Air filter cover locking pieces	3	Y	0.009	Metal	
16	FG-710801-0	隔热垫 Heat pad	1	Y	0.005		
17	F3-700601-0	O形圈 O-ring	1	Y	0.0005	Rubber	
18	F3-701000-F3	化油器座组合 Block carburetor combination	1	N	0.1785	Metal	
19	F3-700401-0	垫圈 Washer	2	Y	0.0007	Metal	
20	BGB/T 70.1-M8×25-52	螺钉 Screw	2	Y	0.015	Metal	
21	F3-720000-F3	化油器 Carburettor	1	Y	0.8425	Metal	
22	F3-700604-F3	气管4 Tracheal 4	1	Y	0.0278	Rubber	
23	F3-700602-F3	气管1 Trachea 1	1	Y	0.0315	Rubber	
24	F3-700701-F3	钢丝夹 Wire clip	8	Y	0.001	Metal	
25	F3-700603-F3	气管2 Trachea 2	1	Y	0.0246	Rubber	

13. Crank Linkage



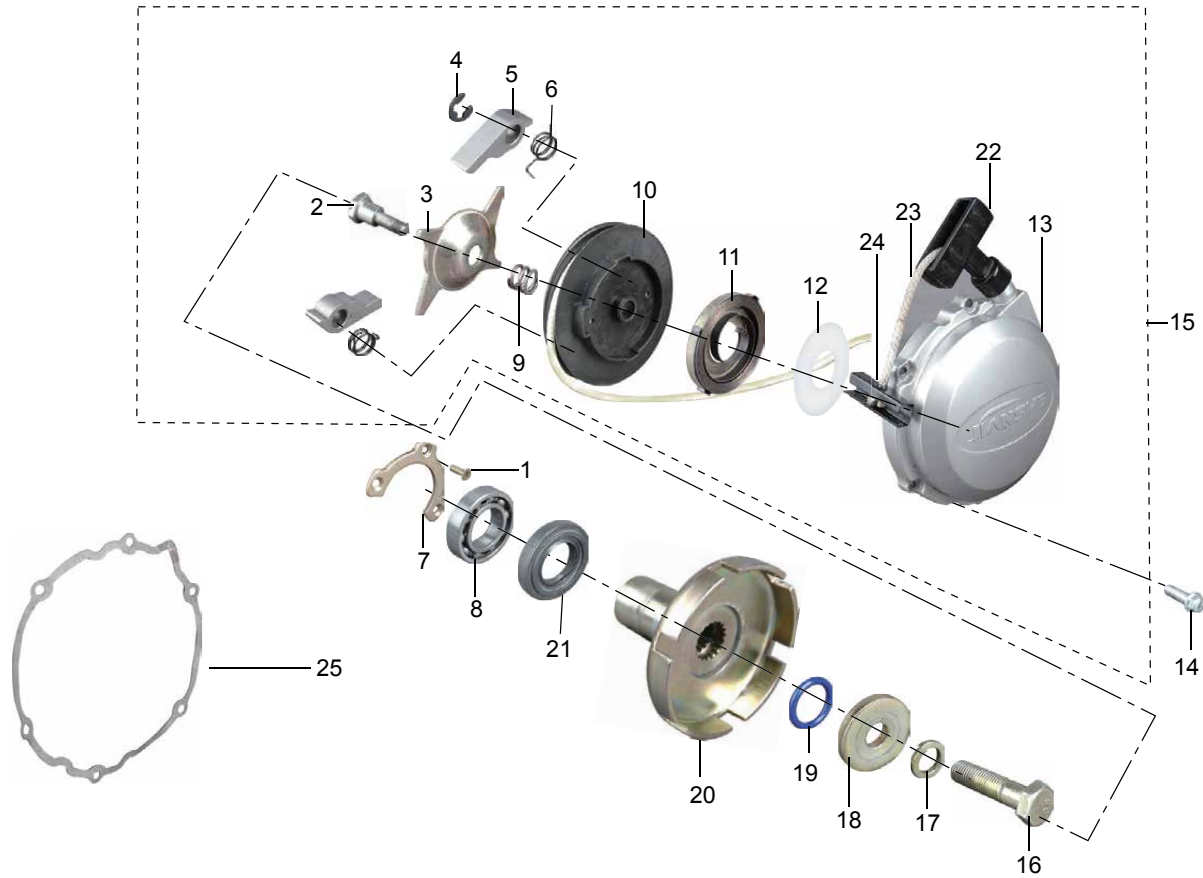
序号 No.	零件代号 Part code	零件名称 Part Name	数量 Amount	是否维修 Y/N Maintenance	重量 Weight	属性 Property	备注 Notes
1	F3-210000-0	曲轴连杆总成 Crankshaft connecting rod assembly	1	Y	5.31	Metal	
2	F3-200702-0	弹簧 Spring	6	Y	0.002	Metal	
3	F3-200004-0	弹簧销 Spring pin	3	Y	0.001	Metal	
4	F3-200302-0	平衡轴驱动齿轮 Balance Shaft Drive Gear	1	Y	0.2005	Metal	
5	F3-200405-0	垫圈 Washer	1	Y	0.015	Metal	
6	F3-600301-0	油泵驱动齿轮 Oil pump drive gear	1	Y	0.1285	Metal	
7	BGB/T 819.1-M6×18-02	螺钉 Screw	3	Y	0.004	Metal	
8	F3-200402-0	压板1 Plate 1	1	Y	0.225	Metal	
9	BGB/T 276-6203	深沟球轴承 Deep groove ball bearings	1	Y	0.136	Metal	
10	FG-202000-0	油封 Oil seal	1	Y	0.011	Rubber	
11	BGB/T 276-6205	深沟球轴承 Deep groove ball bearings	2	Y	0.126	Metal	
12	F3-230000-0	平衡轴总成 Balance Shaft Assembly	1	Y	0.748	Metal	
13	F3-200003-0	平键 Flat key	1	Y	0.001	Metal	
14	BGB/T 819.1-M6×16-02	螺钉 Screw	2	Y	0.004	Metal	
15	F3-200301-0	平衡轴齿轮 Balance Shaft Gear	1	Y	0.265	Metal	
16	F3-200404-0	锁紧垫圈 Lock washers	1	Y	0.0055	Metal	
17	F3-200403-0	压板2 Plate 2	1	Y	0.0175	Metal	
18	F3-200851-0	螺母 Nut	1	Y	0.0225	Metal	
19	FG-200002-0	半圆键 Woodruff Key	1	Y	0.001	Metal	
20	F3-220001-0	活塞环 1 Piston 1	1	Y	0.007	Metal	
21	F3-220002-0	活塞环 2 Piston 2	1	Y	0.009	Metal	
22	F3-221000-0	油环组合 Combined oil ring	1	Y	0.004	Metal	
23	F3-221701-0	衬簧 Liner spring	1	Y	0.002	Metal	
24	F3-200701-0	挡圈 Ring	2	Y	0.0005	Metal	
25	F3-220201-0	活塞 Piston	1	Y	0.273	Metal	

13. Crank Linkage

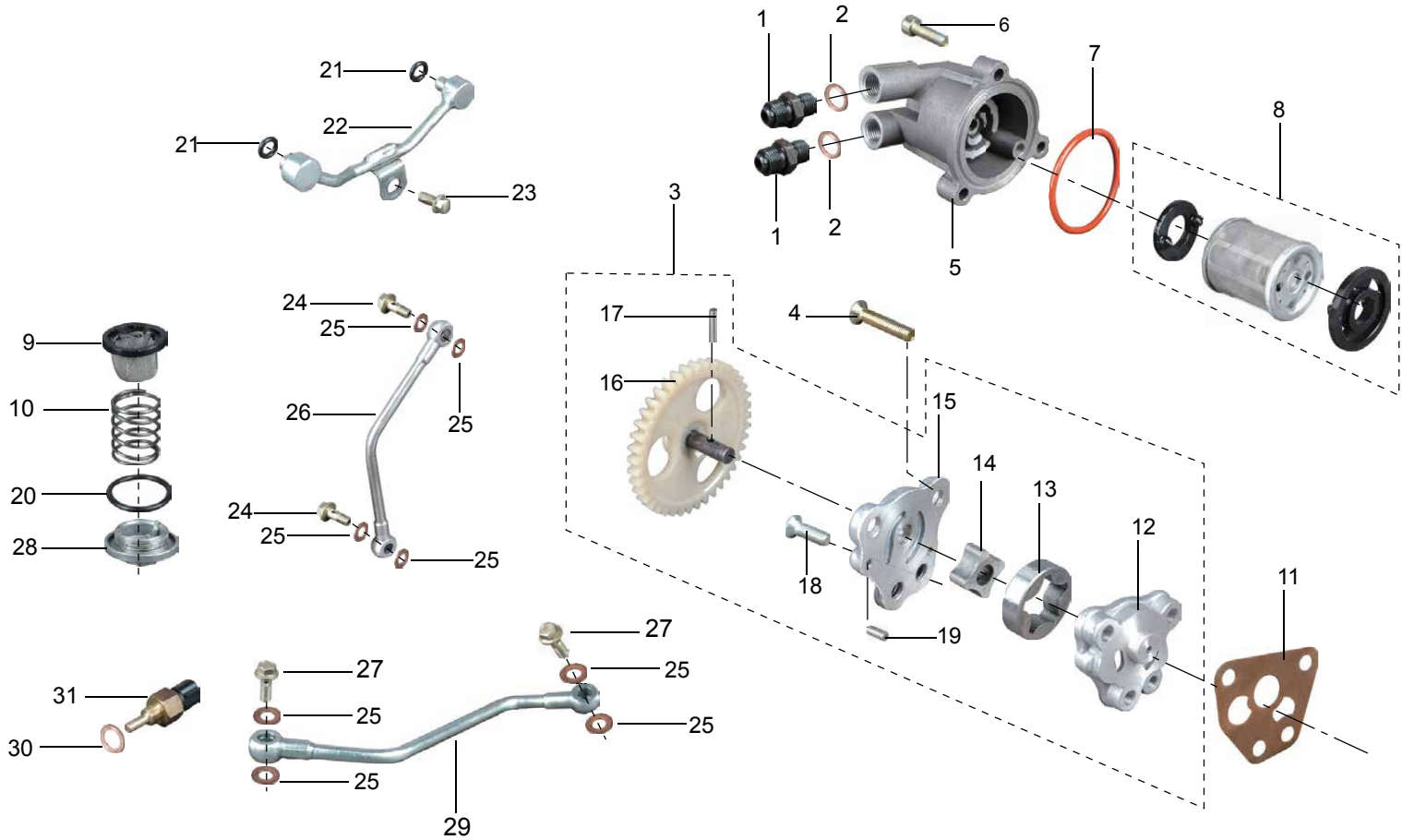


序号 No.	零件代号 Part code	零件名称 Part Name	数量 Amount	是否维修 Y/N Maintenance	重量 Weight	属性 Property	备注 Notes
26	F3-200001-0	活塞销 Piston	1	Y	0.0595	Metal	
27	F3-221001-0	刮片 Scraper	2	Y	0.001	Metal	
28	F3-210003-0	齿轮内环 Inner gear	1	Y	0.068	Metal	
29	F3-200401-0	垫圈 Washer	1	Y	0.0212	Metal	
30	F3-210002-0	衬套 Bush	1	Y	0.015	Metal	
31	F3-214000-0	轴承 Bearing	1	Y	0.023	Metal	

14. Starting System (Hand Start)

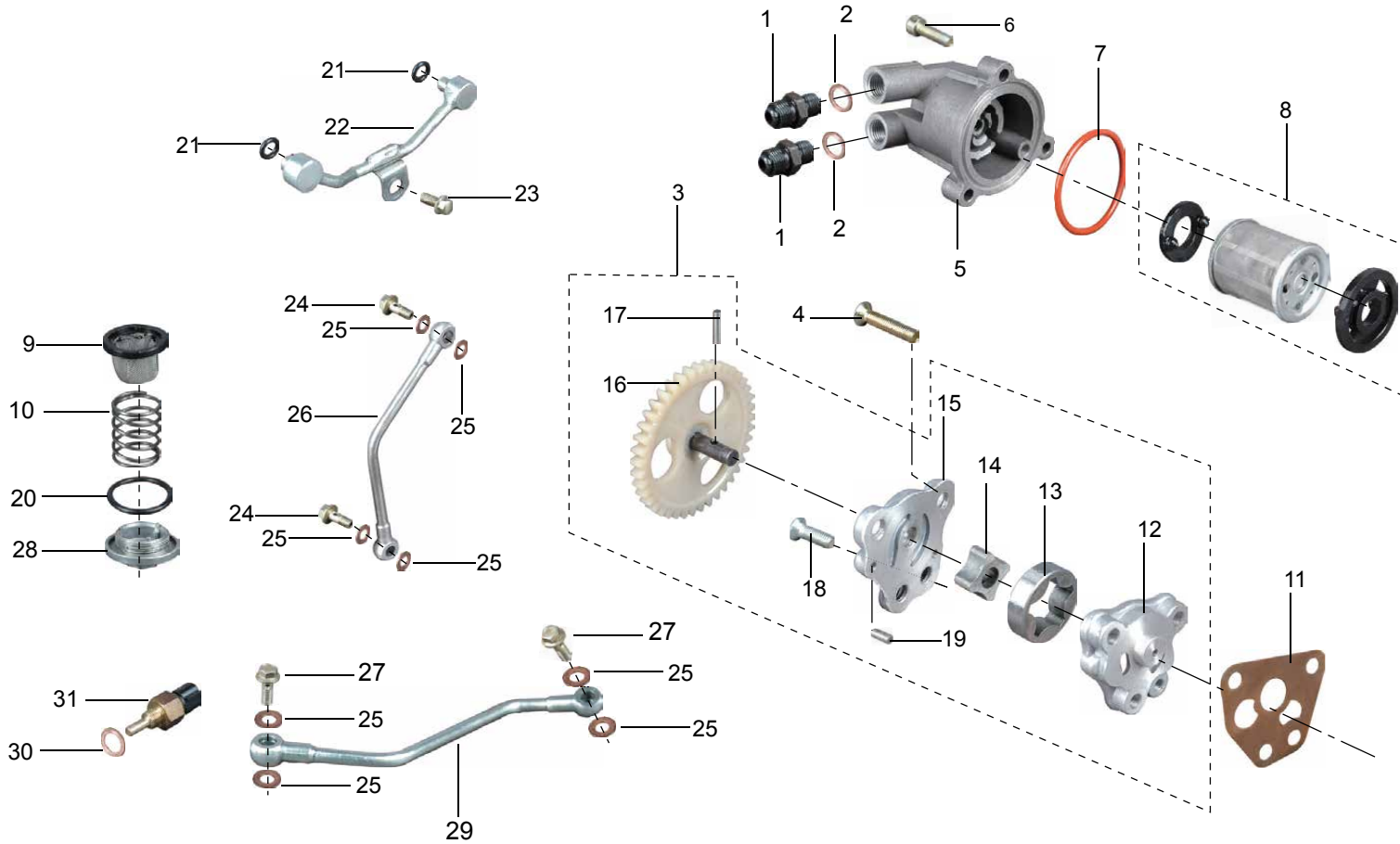


序号 No.	零件代号 Part code	零件名称 Part Name	数量 Amount	是否维修 Y/N Maintenance	重量 Weight	属性 Property	备注 Notes
1	BGB/T 819.1-M5×16-02	螺钉	Screw	3	Y	0.001	Metal
2	FG-870001-0	螺钉销	Screw pin	1	Y	0.009	Metal
3	FG-870401-0	导向板	Guide plate	1	Y	0.0265	Metal
4	BGB/T 896-6-B8	挡圈	Ring	2	Y	0.0005	Metal
5	FG-870851-0	驱动爪	Drive claw	2	Y	0.011	Metal
6	FG-870702-0	扭簧	Torsion spring	2	Y	0.0005	Metal
7	F3-800404-0	压板2	Plate 2	1	Y	0.0195	Metal
8	FG-584000-0	轴承	Bearing	1	Y	0.0915	Metal
9	FG-870701-0	压簧	Compressed spring	1	Y	0.001	Metal
10	FG-871000-0	驱动盘组合	Combination drives	1	Y	0.15	Metal
11	FG-873000-0	卷簧底板组合	Spring coiling combination floor	1	Y	0.137	Metal
12	FG-870801-0	垫片	Gasket	1	Y	0.001	Metal
13	F3-872000-0	左侧盖组合	Left side cover combination	1	Y	0.459	
14	BQ/JR YP80-M6×20-26	螺栓	Bolt	6	Y	0.008	Metal
15	F3-870000-0	手起动机机构组合	Hand starting mechanism assy	1	Y	0.84	
16	BGB/T 5785-M10×1.25-32	六角头螺栓	Hexagon head bolt	1	Y	0.029	Metal
17	BGB/T 93-10-B2	垫圈	Washer	1	Y	0.001	Metal
18	FG-800404-0	垫圈	Washer	1	Y	0.021	Metal
19	FG-800601-0	O形圈	O-ring	1	Y	0.0005	Rubber
20	F3-801000-0	起动机棘轮组合	Combination starter ratchet	1	N	0.2835	Metal
21	F3-802000-0	油封	Oil seal	1	N	0.0185	Rubber
22	FG-870601-0	起动手柄	Starter handle	1	Y	0.0478	Plastic
23	FG-870802-0	拉线	Pull	1	Y	0.02	
24	FG-870402-0	起动手柄盖	Starting lever cover	1	Y	0.017	Metal
25	F3-800801-0	垫片	Gasket	1	Y	0.009	Asbestos





序号 No.	零件代号 Part code	零件名称 Part Name	数量 Amount	是否维修 Y/N Maintenance	重量 Weight	属性 Property	备注 Notes
1	F3-600853-0	接头 Connector	2	Y	0.034	Plastic	
2	F3-600401-0	铜垫圈 Copper washer	2	Y	0.001	Metal	
3	F3-610000-0	机油泵 Oil Pump	1	Y	0.113		
4	BGB/T 819.1-M6×20-02	螺钉 Screw	1	Y	0.004	Metal	
5	F3-670000-0	精滤器盖总成 Fine filter cover assembly	1	Y	0.214	Metal	
6	BGB/T 70.1-M6×30-52	螺钉 Screw	3	Y	0.008	Metal	
7	F3-600601-0	O型圈 O-ring	1	Y	0.001	Rubber	
8	F3-630000-0	机油精滤器 Oil fine filter	1	N	0.0275		
9	FG-620000-0	机油粗滤器 Crude oil filter	1	N	0.002		
10	FG-600701-0	压簧 Compressed spring	1	Y	0.009	Metal	
11	FG-600801-0	油泵垫片 Oil Pump Gasket	1	Y	0.001	Asbestos	
12	F3-610202-0	油泵座 Pump Block	1	Y	0.0285	Metal	
13	F3-610751-0	外转子 Outer rotor	1	Y	0.0185	Metal	
14	F3-610752-0	内转子 Inner rotor	1	Y	0.0075	Metal	
15	FG-610201-0	油泵盖 Pump cover	1	Y	0.02	Metal	
16	F3-611000-0	油泵齿轮组合 Combined oil pump gear	1	Y	0.0395		
17	FG-610001-0	传动销 Drive sales	1	Y	0.001	Metal	
18	BGB/T 819.1-M6×30-02	螺钉 Screw	3	Y	0.0065	Metal	
19	FG-610002-0	定位销 Pin	2	Y	0.002	Metal	
20	FG-600601-0	O型圈 O-ring	1	Y	0.0005	Rubber	
21	F3-600602-0	O型圈 O-ring	2	Y	0.0001	Rubber	
22	F3-603000-0	油管组合3 Tubing Combination 3	1	N	0.026	Metal	
23	BQ/JR YP80-M6×12-22	螺栓 Bolt	1	Y	0.005	Metal	
24	F3-600851-0	螺钉M8×20 Screw M8×20	2	Y	0.0155	Metal	
25	F3-600402-0	铜垫圈 Copper washer	8	Y	0.0005	Metal	



序号 No.	零件代号 Part code	零件名称 Part Name	数量 Amount	是否维修 Y/N Maintenance	重量 Weight	属性 Property	备注 Notes
26	F3-602000-0	油管组合2 Tubing Combination 2	1	N	0.0505	Metal	
27	F3-600852-0	螺钉M8×22 Screw M8 × 22	2	Y	0.0135	Metal	
28	F3-600201-0	放油螺栓 Oil drain bolt	1	Y	0.032	Metal	
29	F3-601000-0	油管组合1 Tubing Combination 1	1	Y	0.045	Metal	
30	FG-500405-0	垫圈 Washer	1	Y	0.0005	Metal	
31	F3-D80000-0	油温传感器 Oil temperature sensor	1	Y	0.034		

**零件号码索引**  
**Parts No Index Chart**

件号	图号	件号	图号	件号	图号
BGB/T 276-6003	7-14	BGB/T 819.1-M6×16-02	10-39	DR8EA/NGK	1-1
BGB/T 276-6004	10-33	BGB/T 819.1-M6×16-02	13-14	EFB-760000-0	12-2-27
BGB/T 276-6005-RS/C3	2-2	BGB/T 819.1-M6×18-02	13-7	F15-700602-0	12-2-23
BGB/T 276-6006-C3	9-1	BGB/T 819.1-M6×20-02	7-17	F15-700701-0	12-2-22
BGB/T 276-6203	10-37	BGB/T 819.1-M6×20-02	15-4	F15-700703-0	12-2-29
BGB/T 276-6203	13-9	BGB/T 819.1-M6×30-02	15-18	F15-705000-0	12-2-26
BGB/T 276-6204	10-20	BGB/T 819.1-M8×25-02	10-26	F3-100202-0	1-12
BGB/T 276-6205	9-20	BGB/T 819.2-M6×20-02	7-7	F3-100401-0	2-17
BGB/T 276-6205	13-11	BGB/T 894.1-12-B8	7-21	F3-100402-0	2-18
BGB/T 276-6206-C2	10-27	BGB/T 894.1-12-B8	11-4	F3-100403-0	1-3
BGB/T 276-6207-C3	9-6	BGB/T 894.2-15-B8	10-46	F3-100601-0	1-11
BGB/T 276-6304	10-2	BGB/T 894.2-26-B8	10-3	F3-100602-0	1-15
BGB/T 276-6305	9-8	BGB/T 894.2-26-B8	10-31	F3-100603-0	1-21
BGB/T 308-8.731G100b	6-22	BGB/T 896-6-B8	14-4	F3-100604-0	1-25
BGB/T 5783-M6×12-32	2-15	BGB/T 93-10-B2	14-17	F3-100605-0	1-18
BGB/T 5783-M6×30-32	10-52	BGB/T 93-6-B2	11-19	F3-100801-0	2-6
BGB/T 5783-M8×30-32	9-17	BGB/T 97.1-6-W2	7-5	F3-101000-0	1-2
BGB/T 5785-M10×1.25-32	14-16	BGB/T 97.1-8-W2	6-2	F3-102000-0	1-22
BGB/T 5786-M10×1.25×25-32	2-20	BGB/T 97.1-8-W2	9-18	F3-103000-0	1-16
BGB/T 5789-M6×12-32	7-18	BGB/T5789-M6×12-37	8-1-2	F3-110000-0	1-13
BGB/T 5789-M8×30-32	10-57	BGB/T5789-M6×12-37	8-2-2	F3-110001-0	3-4
BGB/T 6170-M8-32	6-1	BQ/JR YP80-M6×10-22	1-10	F3-110301-0	3-9
BGB/T 6186-M14×1.5-32	9-16	BQ/JR YP80-M6×12-22	1-14	F3-110302-0	3-8
BGB/T 70.1-M5×12-52	11-18	BQ/JR YP80-M6×12-22	15-23	F3-110303-0	3-6
BGB/T 70.1-M6×16-52	1-5	BQ/JR YP80-M6×14-26	2-16	F3-110304-0	3-7
BGB/T 70.1-M6×16-52	7-1	BQ/JR YP80-M6×16-26	10-51	F3-110305-0	3-3
BGB/T 70.1-M6×25-52	1-19	BQ/JR YP80-M6×20-26	14-14	F3-110306-0	3-13
BGB/T 70.1-M6×30-52	1-24	BQ/JR YP80-M6×25-26	2-8	F3-110402-0	2-14
BGB/T 70.1-M6×30-52	15-6	BQ/JR YP80-M6×30-26	5-2	F3-110403-0	2-13
BGB/T 70.1-M8×14-52	11-16	BQ/JR YP80-M6×30-26	11-6	F3-110701-0	3-11
BGB/T 70.1-M8×25-52	12-1-3	BQ/JR YP80-M6×40-26	5-3	F3-110702-0	3-12
BGB/T 70.1-M8×25-52	12-2-20	BQ/JR YP80-M6×50-26	4-9	F3-110851-0	3-1
BGB/T 70.1-M8×25-52	12-3-20	BQ/JR YP80-M6×60-26	4-6	F3-110852-0	3-2
BGB/T 70.1-M8×50-52	1-7	BQ/JR YP81-M6×30-21	11-20	F3-112000-0	3-10
BGB/T 70.1-M8×60-52	4-10	BQ/JR YP96-14×16-W0	1-20	F3-114001-0	2-7
BGB/T 819.1-M5×16-02	14-1	CY80-01-69	7-27	F3-114201-0	2-1

件号	图号	件号	图号	件号	图号
F3-120000-0	2-11	F3-300801-0	4-5	F3-500004-0	10-47
F3-120403-0	2-10	F3-300801-0	5-8	F3-500201-0	10-53
F3-120851-0	2-9	F3-300802-0	4-3	F3-500202-0	10-24
F3-130000-0	2-4	F3-300802-0	5-7	F3-500301-0	7-3
F3-140000-0	2-12	F3-300851-0	4-7	F3-500302-0	7-37
F3-150000-0	2-5	F3-300852-0	4-8	F3-500303-0	7-4
F3-200001-0	13-26	F3-301000-0	5-5	F3-500304-0	10-34
F3-200002-0	1-27	F3-310000-0	4-4	F3-500305-0	10-49
F3-200003-0	13-13	F3-320000-0	4-1	F3-500306-0	10-45
F3-200004-0	13-3	F3-330000-0	5-11	F3-500401-0	7-22
F3-200301-0	13-15	F3-330001-0	6-19	F3-500402-0	7-19
F3-200302-0	13-4	F3-340000-0	5-1	F3-500403-0	10-40
F3-200401-0	13-29	F3-400301-0	6-14	F3-500404-0	7-29
F3-200402-0	13-8	F3-400401-0	6-9	F3-500405-0	10-43
F3-200403-0	13-17	F3-400402-0	6-17	F3-500406-0	7-2
F3-200404-0	13-16	F3-400501-0	6-24	F3-500407-0	10-54
F3-200405-0	13-5	F3-400601-0	6-15	F3-500408-0	7-35
F3-200601-0	1-28	F3-400851-0	6-13	F3-500409-0	10-25
F3-200701-0	13-24	F3-400852-0	6-4	F3-500601-0	10-50
F3-200702-0	13-2	F3-401000-0	6-23	F3-500701-0	7-23
F3-200801-0	1-26	F3-402000-0	6-7	F3-500703-0	7-26
F3-200851-0	6-16	F3-403000-0	6-6	F3-500751-0	7-15
F3-200851-0	13-18	F3-404000-0	6-5	F3-500851-0	7-28
F3-201000-0	1-23	F3-411000-0	6-10	F3-500852-0	7-34
F3-210000-0	13-1	F3-413000-0	6-11	F3-501000-0	7-24
F3-210002-0	13-30	F3-414000-0	6-12	F3-502000-0	10-55
F3-210003-0	13-28	F3-420401-0	6-26	F3-503000-0	10-36
F3-214000-0	13-31	F3-420402-0	6-20	F3-504000-0	10-1
F3-220001-0	13-20	F3-420701-0	6-8	F3-505000-0	10-41
F3-220002-0	13-21	F3-421000-0	6-21	F3-510001-0	10-48
F3-220201-0	13-25	F3-422000-0	6-25	F3-510301-0	10-38
F3-221000-0	13-22	F3-423000-0	6-18	F3-510302-0	10-56
F3-221001-0	13-27	F3-424000-0	6-27	F3-510304-0	10-35
F3-221701-0	13-23	F3-500001-0	7-38	F3-510305-0	10-42
F3-230000-0	13-12	F3-500002-0	7-36	F3-520001-0	10-13
F3-300401-0	5-6	F3-500003-0	10-44	F3-520302-0	10-9

件号	图号	件号	图号	件号	图号
F3-520303-0	10-7	F3-580405-0	9-10	F3-700601-0	12-2-17
F3-520304-0	10-11	F3-580410-0	10-23	F3-700601-0	12-3-17
F3-520305-0	10-12	F3-580601-0	9-14	F3-700602-F3	12-3-23
F3-520306-0	10-4	F3-580701-0	9-3	F3-700603-F3	12-3-25
F3-520307-0	10-16	F3-580852-0	10-21	F3-700604-F3	12-3-22
F3-520401-0	10-6	F3-581201-0	9-11	F3-700605-F3	12-3-4
F3-520402-0	10-10	F3-581301-0	9-5	F3-700606-F2	12-2-24
F3-520403-0	10-15	F3-581601-0	9-9	F3-700607-F2	12-2-28
F3-520404-0	10-14	F3-581851-0	9-7	F3-700701-F3	12-3-24
F3-520406-0	10-18	F3-582000-0	9-22	F3-700851-0	8-1-6
F3-521000-0	10-8	F3-583000-0	9-12	F3-700851-0	8-2-6
F3-522000-0	10-5	F3-584000-0	9-26	F3-701000-0	12-1-18
F3-524000-0	10-17	F3-586000-0	9-27	F3-701000-F2	12-2-18
F3-530000-0	7-32	F3-600201-0	15-28	F3-701000-F3	12-3-18
F3-540001-0	7-16	F3-600301-0	13-6	F3-702000-0	8-1-5
F3-540002-0	7-12	F3-600401-0	15-2	F3-702000-0	8-2-5
F3-540201-0	7-13	F3-600402-0	15-25	F3-703000-0	12-1-2
F3-540401-0	7-8	F3-600601-0	15-7	F3-703000-0	12-2-2
F3-540701-0	7-10	F3-600602-0	15-21	F3-703000-0	12-3-2
F3-540751-0	7-11	F3-600851-0	15-24	F3-704000-F2	12-2-25
F3-540851-0	7-9	F3-600852-0	15-27	F3-710501-F2	12-2-3
F3-550702-0	7-31	F3-600853-0	15-1	F3-710501-F3	12-3-3
F3-551000-0	7-30	F3-601000-0	15-29	F3-710601-0	12-1-8
F3-560000-0	7-25	F3-602000-0	15-26	F3-710601-0	12-2-8
F3-570001-0	10-29	F3-603000-0	15-22	F3-710601-0	12-3-8
F3-570301-0	10-32	F3-610000-0	15-3	F3-710602-0	12-1-5
F3-570302-0	10-28	F3-610202-0	15-12	F3-710602-F3	12-2-5
F3-570701-0	10-30	F3-610751-0	15-13	F3-710602-F3	12-3-5
F3-580001-0	9-2	F3-610752-0	15-14	F3-710702-F2	12-2-4
F3-580301-0	9-4	F3-611000-0	15-16	F3-720000-0	12-1-4
F3-580302-0	9-19	F3-630000-0	15-8	F3-720000-F2	12-2-21
F3-580303-0	9-13	F3-670000-0	15-5	F3-720000-F3	12-3-21
F3-580304-0	9-29	F3-700401-0	12-1-19	F3-730401-0	8-1-1
F3-580307-0	10-22	F3-700401-0	12-2-19	F3-730401-0	8-2-1
F3-580401-0	9-23	F3-700401-0	12-3-19	F3-730402-0	8-1-3
F3-580402-0	9-15	F3-700601-0	12-1-17	F3-730402-0	8-2-3

件号	图号	件号	图号	件号	图号
F3-730403-0	8-1-12	FG-100601-0	1-6	FG-710603-0	12-1-13
F3-730403-0	8-2-12	FG-100701-0	1-17	FG-710603-0	12-2-13
F3-740000-0	8-1-4	FG-102000-0	1-29	FG-710603-0	12-3-13
F3-740000-0	8-2-4	FG-110601-0	3-5	FG-710701-0	12-1-11
F3-750000-0	8-1-11	FG-200002-0	13-19	FG-710701-0	12-2-11
F3-750000-F2	8-2-11	FG-202000-0	13-10	FG-710701-0	12-3-11
F3-750000-F3	8-1-11	FG-400601-0	6-3	FG-710801-0	12-1-16
F3-800001-0	11-8	FG-500405-0	15-30	FG-710801-0	12-2-16
F3-800002-0	11-5	FG-505000-0	7-33	FG-710801-0	12-3-16
F3-800003-0	11-13	FG-580305-0	9-28	FG-711000-0	12-1-1
F3-800301-0	11-7	FG-580402-0	9-25	FG-711000-0	12-2-1
F3-800302-0	11-1	FG-583851-0	9-21	FG-711000-0	12-3-1
F3-800401-0	11-3	FG-584000-0	14-8	FG-712000-0	12-1-9
F3-800402-0	11-11	FG-586000-0	9-24	FG-712000-0	12-2-9
F3-800403-0	11-17	FG-600601-0	15-20	FG-712000-0	12-3-9
F3-800404-0	14-7	FG-600701-0	15-10	FG-713000-0	12-1-7
F3-800801-0	14-25	FG-600801-0	15-11	FG-713000-0	12-2-7
F3-801000-0	14-20	FG-610001-0	15-17	FG-713000-0	12-3-7
F3-802000-0	14-21	FG-610002-0	15-19	FG-750801-0	8-1-9
F3-803000-0	11-2	FG-610201-0	15-15	FG-750801-0	8-2-9
F3-804000-0	11-10	FG-620000-0	15-9	FG-754000-0	8-1-13
F3-830000-0	11-14	FG-710401-0	12-1-15	FG-754000-0	8-2-13
F3-860000-0	11-12	FG-710401-0	12-2-15	FG-754001-0	8-1-8
F3-870000-0	14-15	FG-710401-0	12-3-15	FG-754001-0	8-2-8
F3-872000-0	14-13	FG-710501-0	12-1-6	FG-754401-0	8-1-10
F3-D51000-0	11-21	FG-710501-0	12-2-6	FG-754401-0	8-2-10
F3-D52000-0	11-15	FG-710501-0	12-3-6	FG-800404-0	14-18
F3-D60000-0	11-9	FG-710502-0	12-1-14	FG-800601-0	14-19
F3-D70000-0	7-6	FG-710502-0	12-3-14	FG-870001-0	14-2
F3-D80000-0	15-31	FG-710502-F2	12-2-14	FG-870401-0	14-3
FA-300001-0	4-2	FG-710503-0	12-1-12	FG-870402-0	14-24
FB-100405-0	1-9	FG-710503-0	12-2-12	FG-870601-0	14-22
FB-110851-0	1-8	FG-710503-0	12-3-12	FG-870701-0	14-9
FG-100001-0	2-3	FG-710504-0	12-1-10	FG-870702-0	14-6
FG-100201-0	1-4	FG-710504-0	12-2-10	FG-870801-0	14-12
FG-100402-0	2-19	FG-710504-0	12-3-10	FG-870802-0	14-23



件号	图号	件号	图号	件号	图号
FG-870851-0	14-5				
FG-871000-0	14-10				
FG-873000-0	14-11				
GB/T29.2-M8×30-21	8-1-7				
GB/T29.2-M8×30-21	8-2-7				
ZA1-300203-0	5-9				
ZA1-300601-0	5-4				
ZA1-300604-0	5-10				
ZA1-402000-0	7-20				
ZA1-500402-0	10-19				

