

## CFR300 Parts Manual

### ENGINE



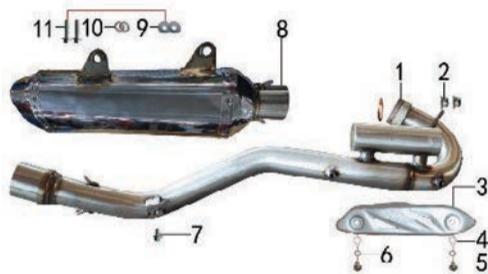

No.	DESCRIPTION	Unit	Amount
1	engine	pcs	1
2	Manifold intake	set	1
3	carburator	pcs	1
4	engine rear hang	pcs	1
5	nut	pcs	2
6	flat washer	pcs	2
7	Spring washer	pcs	2
8	bolt	pcs	2
9	bolt	pcs	1
10	gear lever	pcs	1
11	gear lever head	set	1
12	bolt	pcs	2
13	spacer	pcs	2
14	Spring washer	pcs	2
15	flat washer	pcs	2
16	nut	pcs	2

### AIR FILTER SYSTEM




No.	DESCRIPTION	Unit	Amount
1	Stainless steel hoop	pcs	1
2	air filter inlet	pcs	1
3	Air filter front cover	pcs	1
4	Air filter element	pcs	1
5	air filter bracket	pcs	1
6	Inner bumper	pcs	1
7	bolt	pcs	2
8	bolt	pcs	1
9	Rubber buffer sleeve	set	1

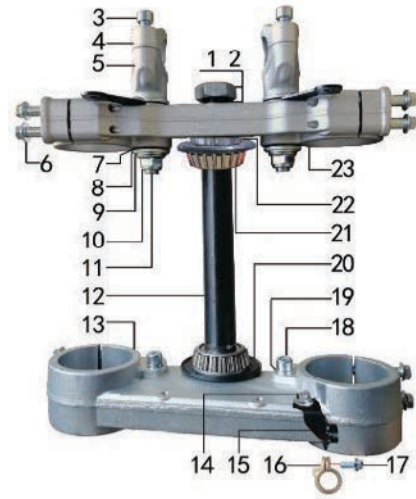
### EXHAUST SYSTEM

No.	DESCRIPTION	Unit	Amount
1	exhaust	pcs	1
2	nut	pcs	2
3	Anti-scald plate	pcs	1
4	flat washer	pcs	2
5	bolt	pcs	2
6	Spring washer	pcs	2
7	bolt	pcs	1
8	muffler	pcs	1
9	flat washer	pcs	2
10	Spring washer	pcs	2
11	bolt	pcs	2

### TRIP CLAMP

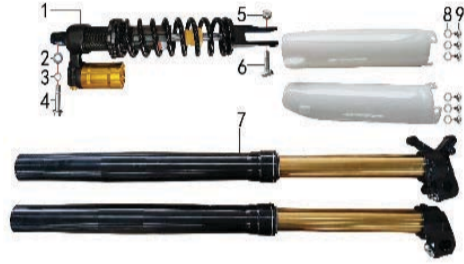
CROSSFIRE



No.	DESCRIPTION	Unit	Amount
1	flat washer	pcs	1
2	nut	pcs	1
3	bolt	pcs	4
4	upper holder block	pcs	2
5	down holder block	pcs	2
6	bolt	pcs	8
7	Rubber buffer block	pcs	4
8	Step washer	pcs	4
9	flat washer	pcs	2
10	nut	pcs	2
11	bolt	pcs	2
12	Steering Axle	pcs	1
13	down connective plate	pcs	1
14	bolt	pcs	1
15	Oil pipe buckle bracket	pcs	1
16	clip nut	pcs	1
17	bolt	pcs	1
18	bolt	pcs	2
19	Spring washer	pcs	2
20	dust cover	pcs	2
21	Tapered bearing	pcs	2
22	locking nut	pcs	1
23	Upper connecting plate	pcs	1

### SUSPENSION SYSTEM

CROSSFIRE



No.	DESCRIPTION	Unit	Amount
1	rear shock	pcs	1
2	flat washer	pcs	1
3	Spring washer	pcs	1
4	bolt	pcs	1
5	nut	pcs	1
6	bolt	pcs	1
7	front suspension	set	1
8	flat washer	pcs	6
9	bolt	pcs	6

### FRAME PARTS

CROSSFIRE



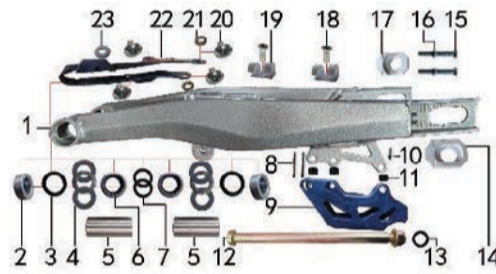
No.	DESCRIPTION	Unit	Amount
1	frame	pcs	1
2	Rubber buffer block	pcs	1
3	Oil Bottle Oil Passing Rubber Plug	pcs	1
4	Rubber buffer block	pcs	1
5	bolt	pcs	1
6	bolt	pcs	1
7	Subframe	pcs	1
8	flat washer	pcs	1
9	frame protection plate	set	1
10	bolt	pcs	3
11	nut	pcs	2
12	engine plate	set	1
13	bolt	pcs	4
14	Flat fork sheath gasket	pcs	2
15	ribbon	pcs	1
16	Round pipe plug	pcs	2
17	Rubber buffer block	pcs	2

## PEDALS



No.	DESCRIPTION	Unit	Amount
1	foot rest right	pcs	1
2	foot rest spring right	pcs	1
3	Cylindrical pin	pcs	2
4	Cotter pin	pcs	4
5	flat washer	pcs	8
6	foot rest spring left	pcs	1
7	foot rest left	pcs	1
8	bearing	pcs	4
9	Chain Roller	pcs	1
10	Chain Roller bracket	pcs	1
11	Chain Roller	pcs	1
12	spacer	pcs	1
13	bearing	pcs	2
14	bolt	pcs	2
15	brake padel spring	pcs	1
16	nut	pcs	1
17	bolt	pcs	1
18	flat washer	pcs	1
19	nut	pcs	1
20	brake padel	pcs	1
21	bolt	pcs	1
22	nut	pcs	1
23	head of brake padel	pcs	1
24	side stand seat	pcs	1
25	nut	pcs	2
26	bolt	pcs	2
27	side stand	pcs	1
28	side stand spring	pcs	1
29	bolt	pcs	1
30	flat washer	pcs	1

## SWING ARM SYSTEM



No.	DESCRIPTION	Unit	Amount
1	rear swingarm	pcs	1
2	spacer	pcs	2
3	framework oil seal	pcs	2
4	Flat thrust bearing	pcs	2
5	rear swingarm right spacer	pcs	2
6	needle bearing	pcs	2
7	framework oil seal	pcs	2
8	bolt	pcs	2
9	chain guard	pcs	1
10	bolt	pcs	1
11	spacer	pcs	3
12	swingarm axle	pcs	1
13	flat washer	pcs	1
14	chain adjuster left	pcs	1
15	bolt	pcs	2
16	nut	pcs	2
17	chain adjuster right	pcs	1
18	bolt	pcs	2
19	Rear brake tube clamp	pcs	2
20	bolt	pcs	4
21	Flat fork jacket gasket	pcs	2
22	Chain Slider	pcs	1
23	flat washer	pcs	1

## LINKAGE SYSTEM



No.	DESCRIPTION	Unit	Amount
1	bolt	pcs	1
2	spacer	pcs	1
3	needle bearing	pcs	2
4	framework oil seal	pcs	6
5	Cradle fork	pcs	1
6	nut	pcs	3
7	bolt	pcs	1
8	bolt	pcs	1
9	trangle conector	pcs	1
10	needle bearing	pcs	1
11	oil seal	pcs	2
12	spacer	pcs	2
13	spacer	pcs	2
14	needle bearing	pcs	4

## HANDLEBARS

No.	DESCRIPTION	Unit	Amount
1	clutch lever	pcs	1
2	off switch	pcs	1
3	handlebar	pcs	1
4	grips	pcs	1
5	rear brake system	set	1
5-1	up pumb	set	1
5-2	down pumb	set	1
5-3	rear brake line	pcs	1
5-4	rear brake pad	set	1
6	bolt	pcs	3
7	clutch line	pcs	1
8	throttle line	pcs	1
9	bolt	pcs	2
10	front brake system	set	1
10-1	up pumb	set	1
10-2	down pumb	set	1
10-3	front brake oil line	pcs	1
10-4	brake lever	pcs	1
10-5	front brake pad	set	1
11	throttle seat	set	1
12	on switch	pcs	1
13	handlebar cover	pcs	1
14	Cable tie	pcs	4

## FRONT WHEEL

No.	DESCRIPTION	Unit	Amount
	front complete wheel	set	
1	front rim+hub set	set	1
1-1	rim	pcs	1
1-2	spoke	pcs	18
1-2	spoke	pcs	18
1-4	front hub	pcs	1
1-5	bearing	pcs	2
1-6	hub oil seal	pcs	2
2	front tyre	set	1
2-1	front inner tyre	pcs	1
2-2	front outer tyre	pcs	1
3	front brake disc	pcs	1
4	bolt	pcs	6
5	nut	pcs	6
6	front wheel axle	pcs	1
7	front wheel right space	pcs	1
8	front wheel left space	pcs	1
9	front rim belt	pcs	1
10	rim lock	pcs	1

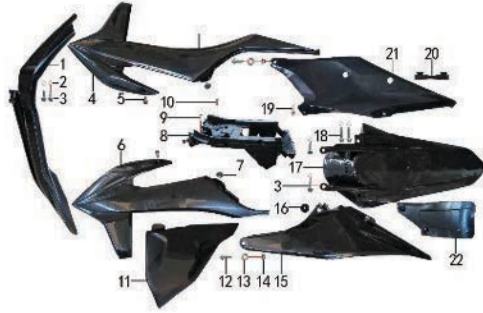
## REAR WHEEL

No.	DESCRIPTION	Unit	Amount
	rear complete wheel	set	1
1	rear rim+hub set	set	1
1-1	rear rim	pcs	1
1-2	spoke	pcs	16
1-2	spoke	pcs	16
1-3	rear hub	pcs	1
1-4	bearing	pcs	4
1-5	hub oil seal	pcs	2
2	rear tyre	set	1
2-1	rear inner tyre	pcs	1
2-2	rear outer tyre	pcs	1
3	rear brake disc	pcs	1
4	bolt	pcs	4
5	nut	pcs	4
6	bolt	pcs	6
7	nut	pcs	6
8	rear sprocket	pcs	1
9	rear wheel axle	pcs	1
10	rear wheel left space	pcs	1
11	rear wheel right space	pcs	1
12	chain	pcs	1
13	rim lock	pcs	1
14	rim belt	pcs	1

## ELECTRICAL

No.	DESCRIPTION	Unit	Amount
1	ignition coil	pcs	1
2	bolt	pcs	1
3	CDI	pcs	1
4	CDI Fixed plate	pcs	1
5	nut	pcs	2
6	bolt	pcs	1
7	rectifier	pcs	1
8	bolt	pcs	1
9	electric door lock	pcs	1
10	Relay	pcs	1
11	battery	pcs	1
12	wire loom	set	1
13	Battery box pressure plate	pcs	1
14	bolt	pcs	1
15	flat washer	pcs	1

## PLASTICS



No.	DESCRIPTION	Unit	Amount
	a set of plastic cover	set	1
1	front fender	pcs	1
2	flat washer	pcs	6
3	bolt	pcs	4
4	front right side plate	pcs	1
5	bolt	pcs	2
6	front left side plate	pcs	1
7	bolt	pcs	2
8	battery box	pcs	1
9	bolt	pcs	1
10	bolt	pcs	1
11	middle left side plate	pcs	1
12	bolt	pcs	2
13	Step bush	pcs	2
14	nut	pcs	2
15	rear left side plate	pcs	1
16	Rubber buffer sleeve	set	1
17	rear fender	pcs	1
18	bolt	pcs	2
19	bolt	pcs	1
20	Side panel insulation rubber pad	pcs	1
21	rear right side plate	pcs	1
22	Rear mudguard	pcs	1

## SEAT



No.	DESCRIPTION	Unit	Amount
1	seat	pcs	1
2	bolt	pcs	1
3	bolt	pcs	1
4	number plate bracket	pcs	1
5	number plate	pcs	1
6	bolt	pcs	7
7	Connecting piece	pcs	1
8	bolt	pcs	2
9	bolt	pcs	1
10	flat washer	pcs	1
11	flat washer	pcs	1
12	bolt	pcs	2
13	tank	pcs	1
14	oil filter	pcs	1
15	Silicone tube	pcs	1

## WIND DEFLECTOR



No.	DESCRIPTION	Unit	Amount
1	flat washer	pcs	8
2	O-type rubber seal ring	pcs	4
3	bolt	pcs	4
4	Wind deflector	set	1
5	bolt	pcs	4

## OTHER

No.	DESCRIPTION	Unit	Amount
1	sticker	set	1
2	oil pipe	pcs	1
3	oil pipe	pcs	1
4	Tubing spring	pcs	4